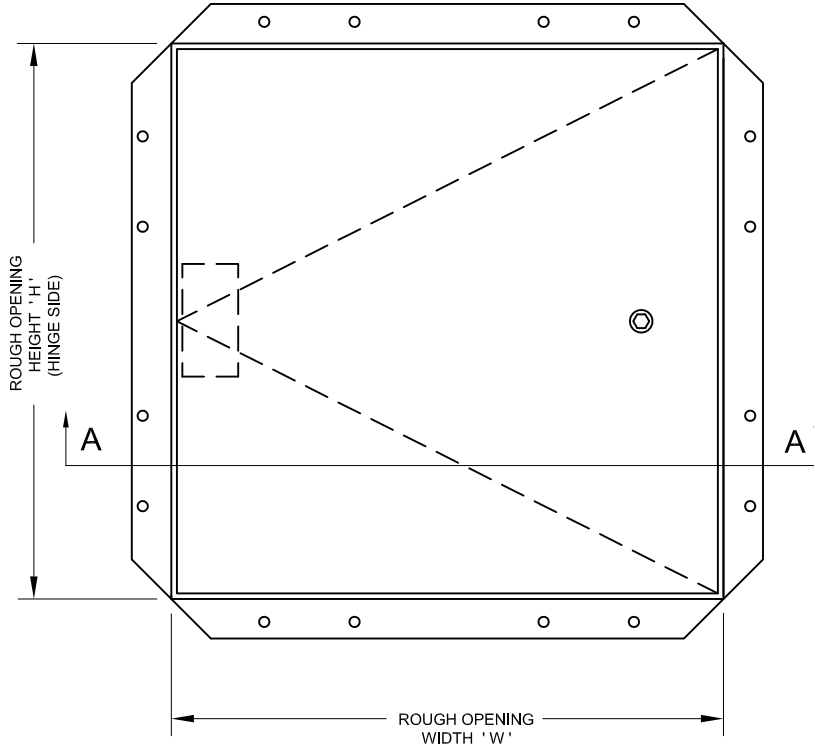


Designed with a galvanized steel drywall bead flange.

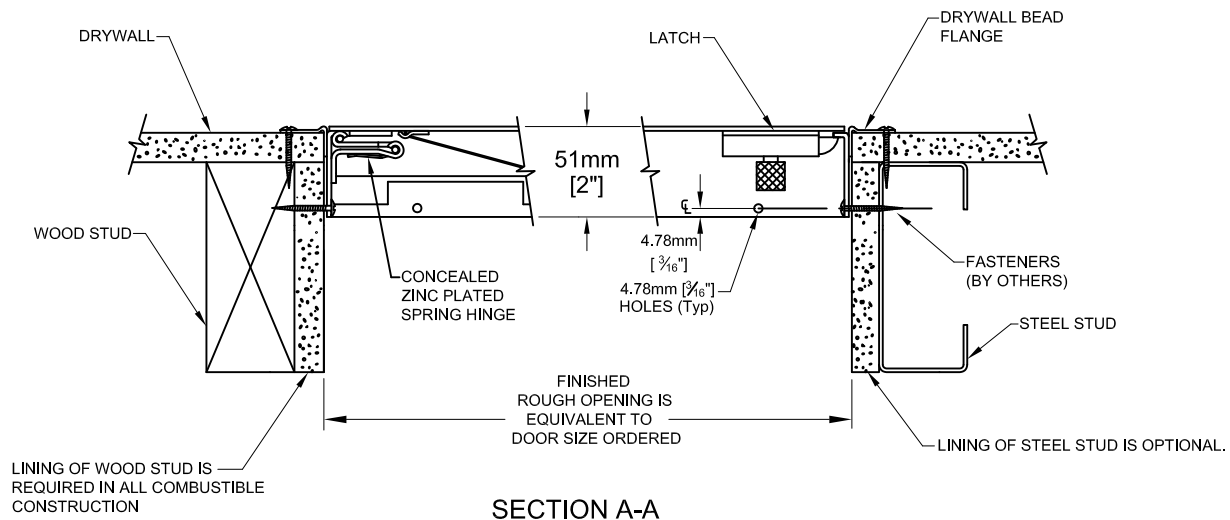
STANDARD CONSTRUCTION:

- MATERIAL** - SATIN FINISH GALVANIZED (GALVANNEALED) STEEL.
- PANEL** - 1.99mm [14 ga].
- FRAME** - 1.61mm [16 ga].
- FLANGE** - GALVANIZED STEEL DRYWALL BEAD TAPING FLANGE.
- HINGE** - CONCEALED ZINC PLATED SPRING HINGE (OPENS TO 175°). NUMBER OF HINGES VARIES WITH SIZE OF DOOR.
- PANEL CLOSER** - THE AUTOMATIC PANEL CLOSER WILL CLOSE AND LATCH THE DOOR FROM AN OPEN POSITION OF APPROXIMATELY 90° AS REQUIRED BY CODE.
- LATCH** - ¼" ALLEN KEY, WITH INTERIOR RELEASE.
- FINISH** - RUST INHIBITIVE PRIME COAT (OFF-WHITE).



FRONT ELEVATION

* Specifications subject to change without notice.



SECTION A-A

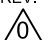
PROJECT: _____

CONTRACTOR: _____

ARCH. OR ENG.: _____

DATE: _____

These drawings are the property of Maxam Metal Products Ltd. and incorporates information which is proprietary. Publication and/or public distribution in whole or in part is expressly prohibited without the prior written consent of Maxam Metal Products Ltd. The information herein remains the property of Maxam Metal Products Ltd. All rights reserved.

DWN BY KB	DATE Jan. / 2014	DWG. NO. Sheet 1 of 3	REV. 
--------------	---------------------	--------------------------	---

OPTIONS: * - DENOTES ADDITIONAL COST.

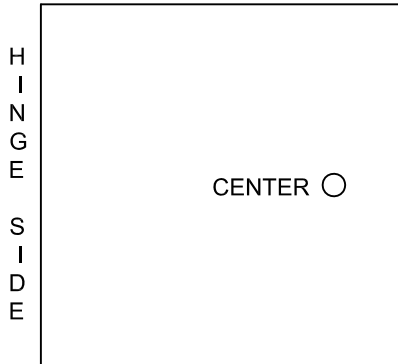
MATERIAL :-

- STANDARD MATERIAL - GALVANNEALED STEEL. SEE SHEET 1 OF 3.
- * - OPTIONAL MATERIAL - 304 STAINLESS STEEL WITH A NO. 4 POLISHED FINISH ON THE EXTERIOR SURFACE.

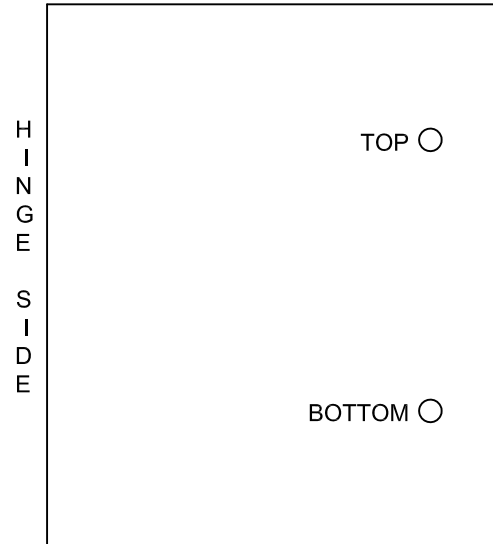
HARDWARE :-

- STANDARD HARDWARE - ¼" ALLEN KEY. SEE SHEET 1 OF 3.
- OPTIONAL HARDWARE - **NOTE: TWO LATCHES ARE REQUIRED ON DOORS LARGER THAN 610mm x 1219mm [24" x 36"]. SEE SHEET 2 OF 3.**

ONE LATCH



TWO LATCHES



CENTER LATCH

- ALLEN KEY
- RAISED KNURLED KNOB.
- * - 1⅛" MORTISE PREP ONLY.
- * - 1⅛" MORTISE PREP COMPLETE WITH MORTISE CYLINDER.

TOP LATCH

- ALLEN KEY
- RAISED KNURLED KNOB.
- * - 1⅛" MORTISE PREP ONLY.
- * - 1⅛" MORTISE PREP COMPLETE WITH MORTISE CYLINDER.

BOTTOM LATCH

- ALLEN KEY
- RAISED KNURLED KNOB.
- * - 1⅛" MORTISE PREP ONLY.
- * - 1⅛" MORTISE PREP COMPLETE WITH MORTISE CYLINDER.

PROJECT: _____

PURCHASE ORDER: _____

CONTRACTOR: _____

APPROVED BY: _____

ARCH. OR ENG.: _____

DATE: _____