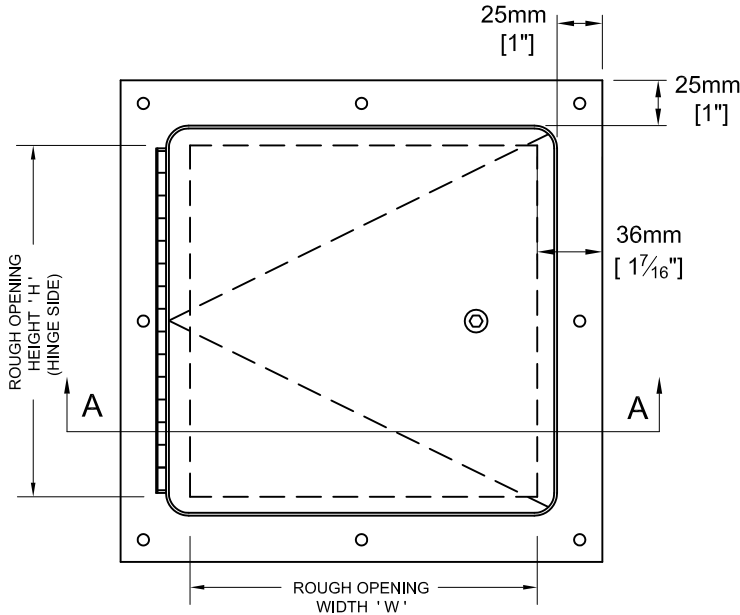


Surface mounted with no inner frame. The 16mm [ $\frac{5}{8}$ "] deep door assembly makes it ideal when objects (pipes etc.) interfere with the standard inner door frame.

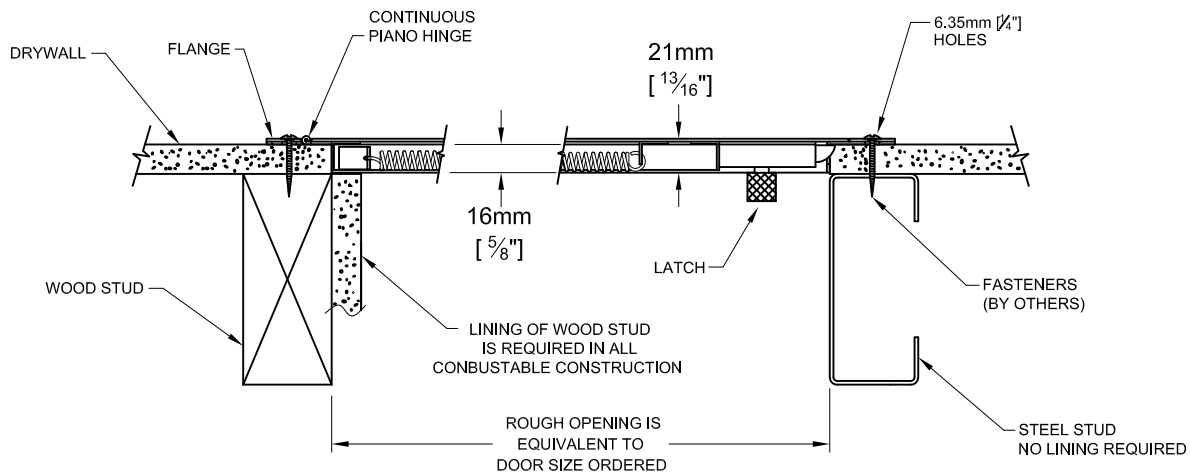


**FRONT ELEVATION**

**STANDARD CONSTRUCTION:**

- MATERIAL** - SATIN FINISH GALVANIZED (GALVANNEALED) STEEL.
- PANEL** - 1.61mm [16 ga].
- FRAME** - 1.61mm [16 ga].
- FLANGE** - 37mm [ $1\frac{1}{16}$ "] EXTERIOR FLANGE.
- HINGE** - CONTINUOUS PIANO HINGE.
- PANEL CLOSER** - THE AUTOMATIC PANEL CLOSER WILL CLOSE AND LATCH THE DOOR FROM AN OPEN POSITION OF APPROXIMATELY 90° AS REQUIRED BY CODE.
- LATCH** -  $\frac{3}{4}$ " ALLEN KEY, WITH INTERIOR RELEASE.
- FINISH** - RUST INHIBITIVE PRIME COAT (OFF-WHITE).

\* Specifications subject to change without notice.



**NOTE: DO NOT INCLUDE THE DRYWALL AS THIS IS INSIDE THE ROUGH OPENING.**

**SECTION A-A**

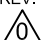
PROJECT: \_\_\_\_\_

CONTRACTOR: \_\_\_\_\_

ARCH. OR ENG.: \_\_\_\_\_

DATE: \_\_\_\_\_

These drawings are the property of Maxam Metal Products Ltd. and incorporates information which is proprietary. Publication and/or public distribution in whole or in part is expressly prohibited without the prior written consent of Maxam Metal Products Ltd. The information herein remains the property of Maxam Metal Products Ltd. All rights reserved.

DWN BY KB	DATE Jan. / 2014	DWG. NO. Sheet 1 of 2	REV. 
--------------	---------------------	--------------------------	---

**INSTALLATION:**

The panel is surface mounted through all the holes on the outer flange.  
Review installation drawings before installing.  
The number of mounting holes will vary with the size of the door.  
See installation instructions supplied with panel.

**WARRANTY:**

One Year Limited warranty. For complete details see **Access Door** warranty document.

**OPTIONS:**

\* - DENOTES ADDITIONAL COST.

- RAISED KNURLED KNOB.

**ORDERING:**

- PLEASE ORDER BY FINISHED ROUGH OPENING SIZE.

- WHEN ORDERING THE SECOND DIMENSION GIVEN IS THE HINGE SIDE. (ie. 457mm x 610mm [18" x 24"], THE 610mm [24"] DIMENSION IS THE HINGE SIDE.

- THESE DOORS ARE NON-RETURNABLE.



Model FFM is designed to maintain the continuity of a fire barrier when installed in a **vertical separation**. The assembly is manufactured under the factory inspection service of Intertek (Warnock Hersey) and has a label reading: "Listed access frame and fire door assembly. **2 hour fire rating**. Vertical installation only. No temperature rise rating."

**FFM - STANDARD SIZES**

In Stock	Rough Opening Size W x H		No. of Latches/Locks	Weight in kgs.	Weight in lbs.
	Metric (mm)	Inches			
	152 x 152	6 x 6	1	1.36	3.00
■	203 x 203	8 x 8	1	2.04	4.50
■	254 x 254	10 x 10	1	2.60	5.75
■	305 x 305	12 x 12	1	3.06	6.75
	356 x 356	14 x 14	1	4.08	9.00
	406 x 406	16 x 16	1	5.21	11.50
	457 x 457	18 x 18	1	6.12	13.50
	508 x 508	20 x 20	1	8.05	17.75
	559 x 559	22 x 22	1	9.18	20.25
	610 x 610	24 x 24	1	10.43	23.00
	610 x 762	24 x 30	1	12.47	27.50



**PROJECT SCHEDULE**

- millimeters  
 - inches

Qty	Rough Opening Size		Options
	Width	Height	



**METAL STUD FRAMING:**

Net Opening = R.O.Width minus 6mm [¼"]  
R.O.Height minus 6mm [¼"]

**WOOD STUD FRAMING with 5/8" DRYWALL LINING:**

Net Opening = R.O.Width minus 38mm [1½"]  
R.O.Height minus 38mm [1½"]

PROJECT: \_\_\_\_\_

PURCHASE ORDER: \_\_\_\_\_

CONTRACTOR: \_\_\_\_\_

APPROVED BY: \_\_\_\_\_

ARCH. OR ENG.: \_\_\_\_\_

DATE: \_\_\_\_\_