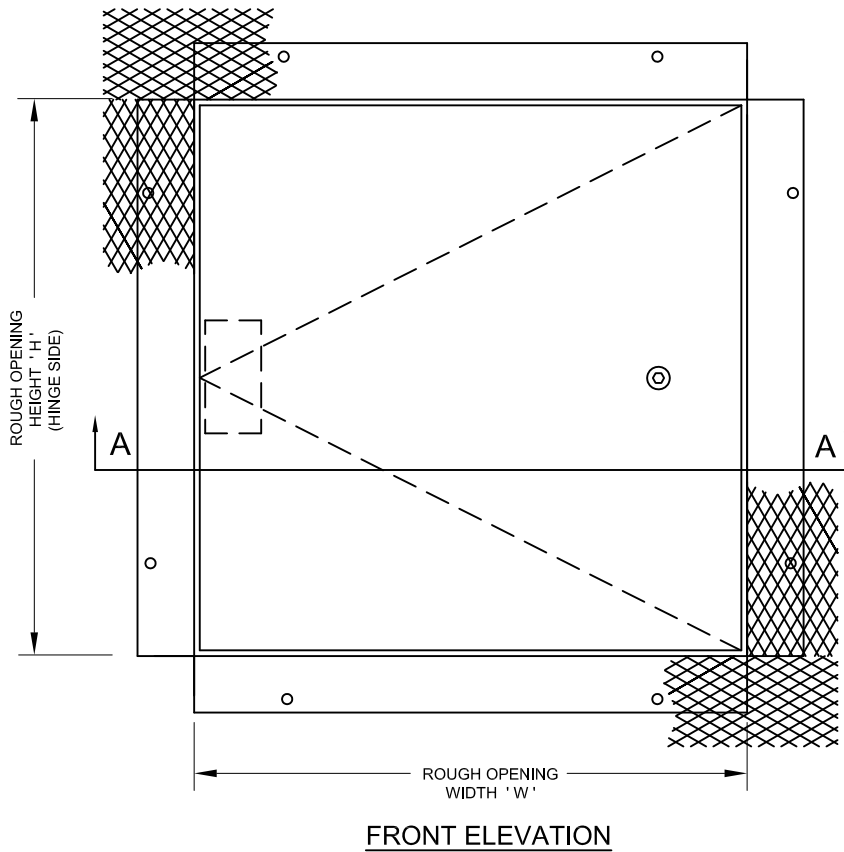


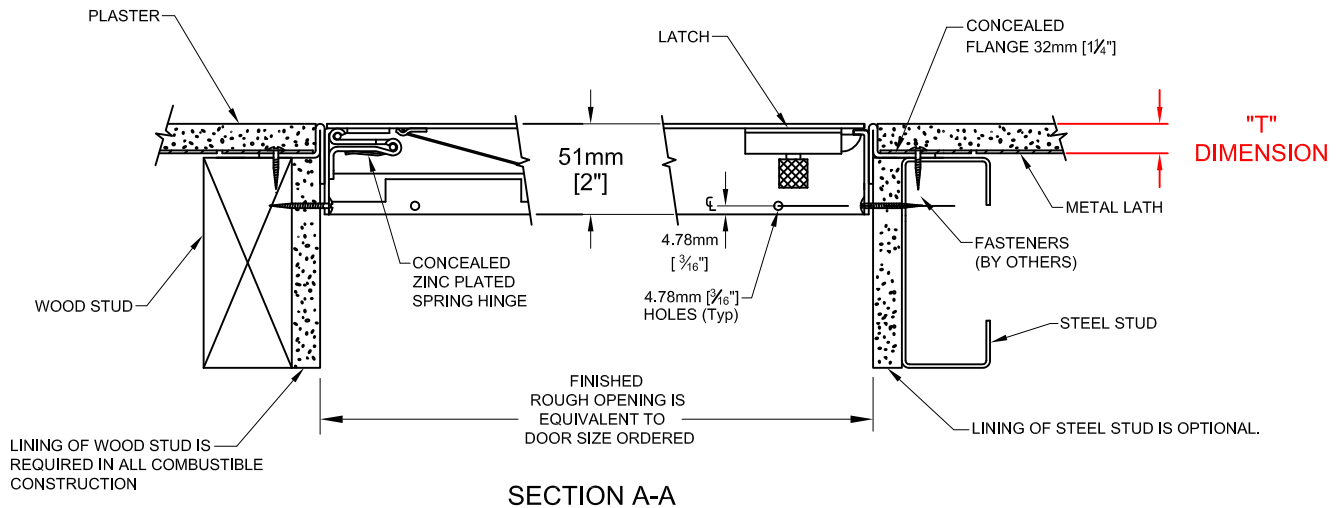
Designed with a hidden flange specifically for use with plaster, masonry, ceramic tile, or other wall coatings which require finishing up to the door panel.

**STANDARD CONSTRUCTION:**

- MATERIAL** - SATIN FINISH GALVANIZED (GALVANNEALED) STEEL.
- PANEL** - 1.99mm [14 ga].
- FRAME** - 1.61mm [16 ga].
- FLANGE** - 32mm [1¼"] WIDE GALVANIZED CONCEALED PLASTER FLANGE c/w A 51mm [2"] WIDE METAL LATH.
- HINGE** - CONCEALED ZINC PLATED SPRING HINGE (OPENS TO 175°). NUMBER OF HINGES VARIES WITH SIZE OF DOOR.
- PANEL CLOSER** - THE AUTOMATIC PANEL CLOSER WILL CLOSE AND LATCH THE DOOR FROM AN OPEN POSITION OF APPROXIMATELY 90° AS REQUIRED BY CODE.
- LATCH** - ¼" ALLEN KEY, WITH INTERIOR RELEASE.
- FINISH** - RUST INHIBITIVE PRIME COAT (OFF-WHITE).



**STANDARD "T" DIMENSION - 16MM [5/8"]**



PROJECT: \_\_\_\_\_


CONTRACTOR: \_\_\_\_\_

ARCH. OR ENG.: \_\_\_\_\_

DATE: \_\_\_\_\_

\* Specifications subject to change without notice.

These drawings are the property of Maxam Metal Products Ltd. and incorporates information which is proprietary. Publication and/or public distribution in whole or in part is expressly prohibited without the prior written consent of Maxam Metal Products Ltd. The information herein remains the property of Maxam Metal Products Ltd. All rights reserved.

DWN BY KB	DATE Jan. / 2014	DWG. NO. Sheet 1 of 3	REV. 
--------------	---------------------	--------------------------	---



**OPTIONS:** \* - DENOTES ADDITIONAL COST.

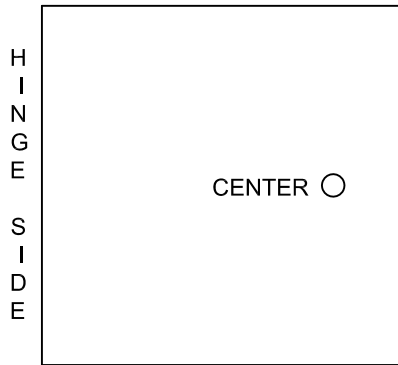
**MATERIAL :-**

- STANDARD MATERIAL - GALVANNEALED STEEL. SEE SHEET 1 OF 3.
- \*  - OPTIONAL MATERIAL - 304 STAINLESS STEEL WITH A NO. 4 POLISHED FINISH ON THE EXTERIOR SURFACE.
- \*  - OPTIONAL "T" DIMENSION SPECIFIED BY CUSTOMER = \_\_\_\_\_. SEE SHEET 1 OF 3.

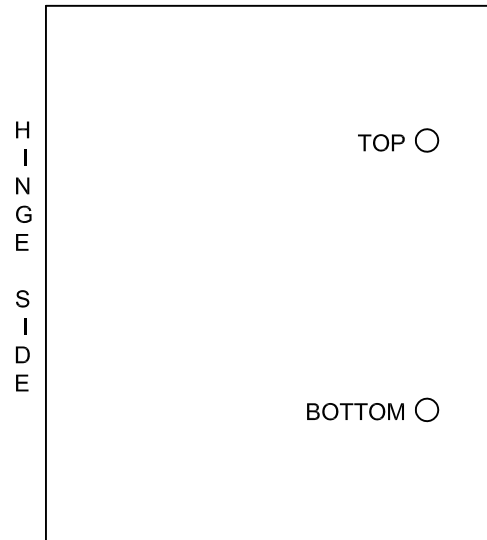
**HARDWARE :-**

- STANDARD HARDWARE - ¼" ALLEN KEY. SEE SHEET 1 OF 3.
- OPTIONAL HARDWARE - **NOTE: TWO LATCHES ARE REQUIRED ON DOORS LARGER THAN 610mm x 1219mm [24" x 36"]. SEE SHEET 2 OF 3.**

ONE LATCH



TWO LATCHES


CENTER LATCH

- ALLEN KEY
- RAISED KNURLED KNOB.
- \*  - 1/8" MORTISE PREP ONLY.
- \*  - 1/8" MORTISE PREP COMPLETE WITH MORTISE CYLINDER.

TOP LATCH

- ALLEN KEY
- RAISED KNURLED KNOB.
- \*  - 1/8" MORTISE PREP ONLY.
- \*  - 1/8" MORTISE PREP COMPLETE WITH MORTISE CYLINDER.

BOTTOM LATCH

- ALLEN KEY
- RAISED KNURLED KNOB.
- \*  - 1/8" MORTISE PREP ONLY.
- \*  - 1/8" MORTISE PREP COMPLETE WITH MORTISE CYLINDER.

PROJECT: \_\_\_\_\_

PURCHASE ORDER: \_\_\_\_\_

CONTRACTOR: \_\_\_\_\_

APPROVED BY: \_\_\_\_\_

ARCH. OR ENG.: \_\_\_\_\_

DATE: \_\_\_\_\_