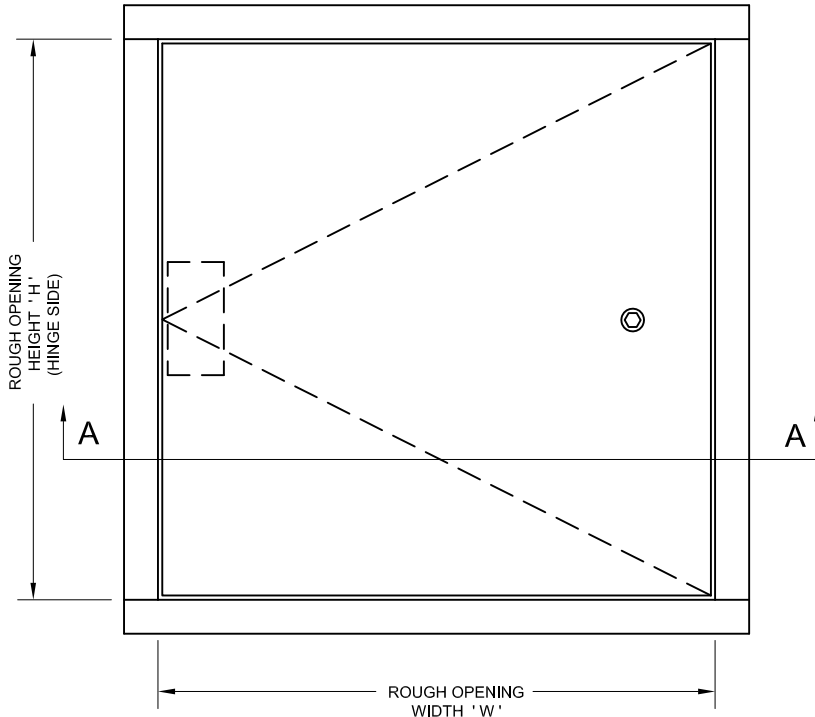


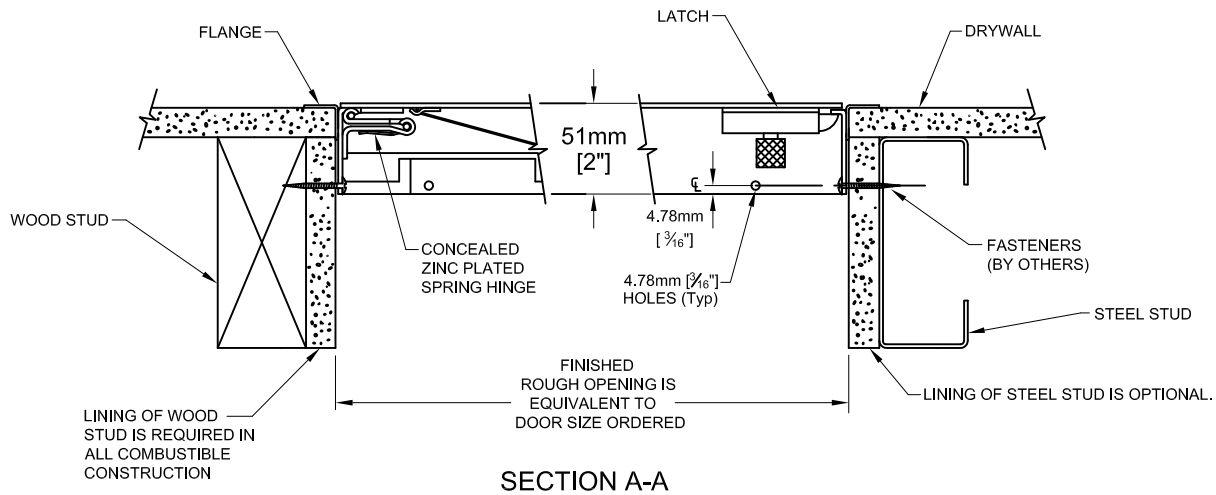
Designed for installation in all types of building materials and is ideal for new construction or remodeling work.

**STANDARD CONSTRUCTION:**

- MATERIAL** - SATIN FINISH GALVANIZED (GALVANNEALED) STEEL.
- PANEL** - 1.99mm [14 ga].
- FRAME** - 1.61mm [16 ga].
- FLANGE** - 19mm [ $\frac{3}{4}$ "] EXTERIOR FLANGE UP TO AND INCLUDING 914mm x 914mm [36" x 36"]. LARGER SIZES: 32mm [1 $\frac{1}{4}$ "].
- HINGE** - CONCEALED ZINC PLATED SPRING HINGE (OPENS TO 175°). NUMBER OF HINGES VARIES WITH SIZE OF DOOR.
- PANEL CLOSER** - THE AUTOMATIC PANEL CLOSER WILL CLOSE AND LATCH THE DOOR FROM AN OPEN POSITION OF APPROXIMATELY 90° AS REQUIRED BY CODE.
- LATCH** -  $\frac{1}{4}$ " ALLEN KEY, WITH INTERIOR RELEASE.
- FINISH** - RUST INHIBITIVE PRIME COAT (OFF-WHITE).



**FRONT ELEVATION**



**SECTION A-A**

\* Specifications subject to change without notice.

PROJECT: \_\_\_\_\_


CONTRACTOR: \_\_\_\_\_

ARCH. OR ENG.: \_\_\_\_\_

DATE: \_\_\_\_\_

Revised 08/08/16

These drawings are the property of Maxam Metal Products Ltd. and incorporates information which is proprietary. Publication and/or public distribution in whole or in part is expressly prohibited without the prior written consent of Maxam Metal Products Ltd. The information herein remains the property of Maxam Metal Products Ltd. All rights reserved.

|              |                     |                          |   |
|--------------|---------------------|--------------------------|---|
| DWN BY<br>KB | DATE<br>Jan. / 2014 | DWG. NO.<br>Sheet 1 of 3 | REV.<br> |
|--------------|---------------------|--------------------------|---|



**OPTIONS:** \* - DENOTES ADDITIONAL COST.

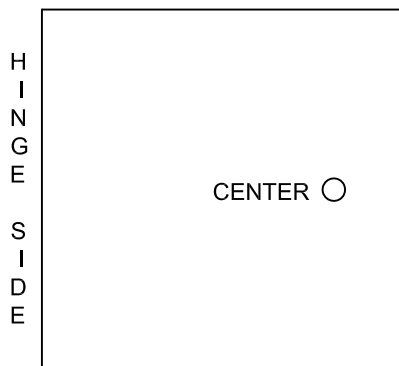
**MATERIAL :-**

- STANDARD MATERIAL - GALVANNEALED STEEL. SEE SHEET 1 OF 3.
- \*  - OPTIONAL MATERIAL - 304 STAINLESS STEEL WITH A NO. 4 POLISHED FINISH ON THE EXTERIOR SURFACE.
- \*  - MASONRY ANCHORS ATTACHED.

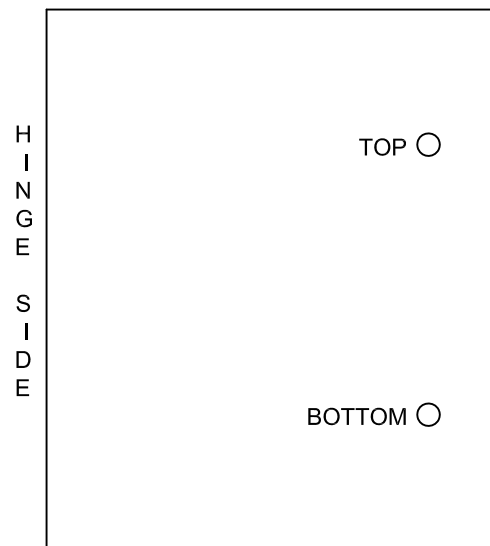
**HARDWARE :-**

- STANDARD HARDWARE - 1/4" ALLEN KEY. SEE SHEET 1 OF 3.
- OPTIONAL HARDWARE - **NOTE: TWO LATCHES ARE REQUIRED ON DOORS LARGER THAN 610mm x 1219mm [24" x 36"]. SEE SHEET 2 OF 3.**

ONE LATCH



TWO LATCHES


CENTER LATCH

- ALLEN KEY
- RAISED KNURLED KNOB.
- \*  - 1/8" MORTISE PREP ONLY.
- \*  - 1/8" MORTISE PREP COMPLETE WITH MORTISE CYLINDER.

TOP LATCH

- ALLEN KEY
- RAISED KNURLED KNOB.
- \*  - 1/8" MORTISE PREP ONLY.
- \*  - 1/8" MORTISE PREP COMPLETE WITH MORTISE CYLINDER.

BOTTOM LATCH

- ALLEN KEY
- RAISED KNURLED KNOB.
- \*  - 1/8" MORTISE PREP ONLY.
- \*  - 1/8" MORTISE PREP COMPLETE WITH MORTISE CYLINDER.

PROJECT: \_\_\_\_\_

PURCHASE ORDER: \_\_\_\_\_

CONTRACTOR: \_\_\_\_\_

APPROVED BY: \_\_\_\_\_

ARCH. OR ENG.: \_\_\_\_\_

DATE: \_\_\_\_\_

Revised 08/08/16

|              |                     |                          |           |
|--------------|---------------------|--------------------------|-----------|
| DWN BY<br>KB | DATE<br>Jan. / 2014 | DWG. NO.<br>Sheet 3 of 3 | REV.<br>1 |
|--------------|---------------------|--------------------------|-----------|