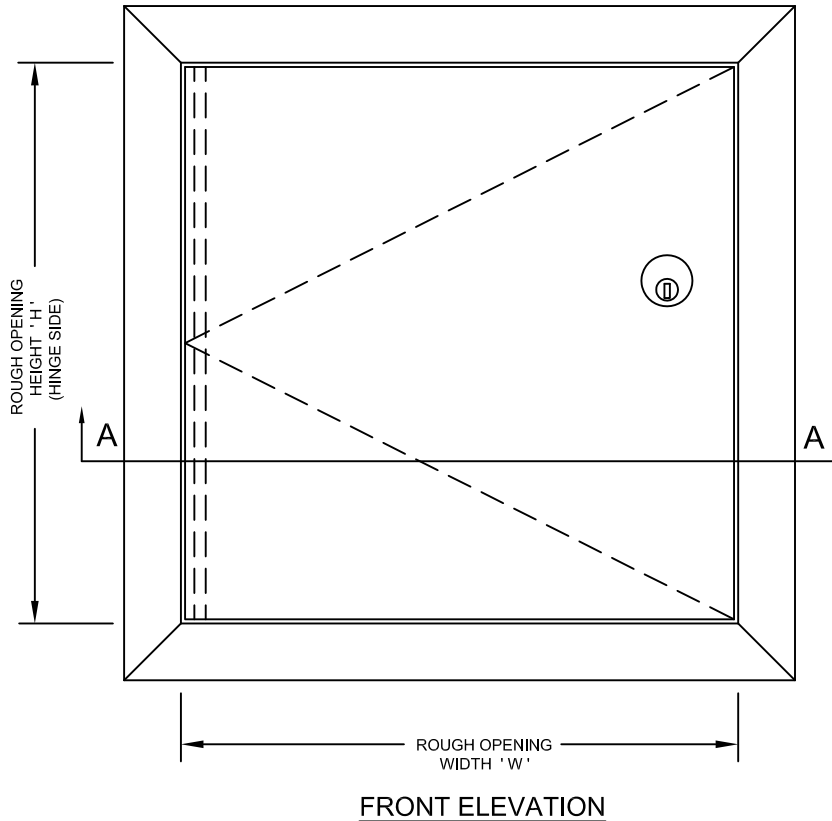


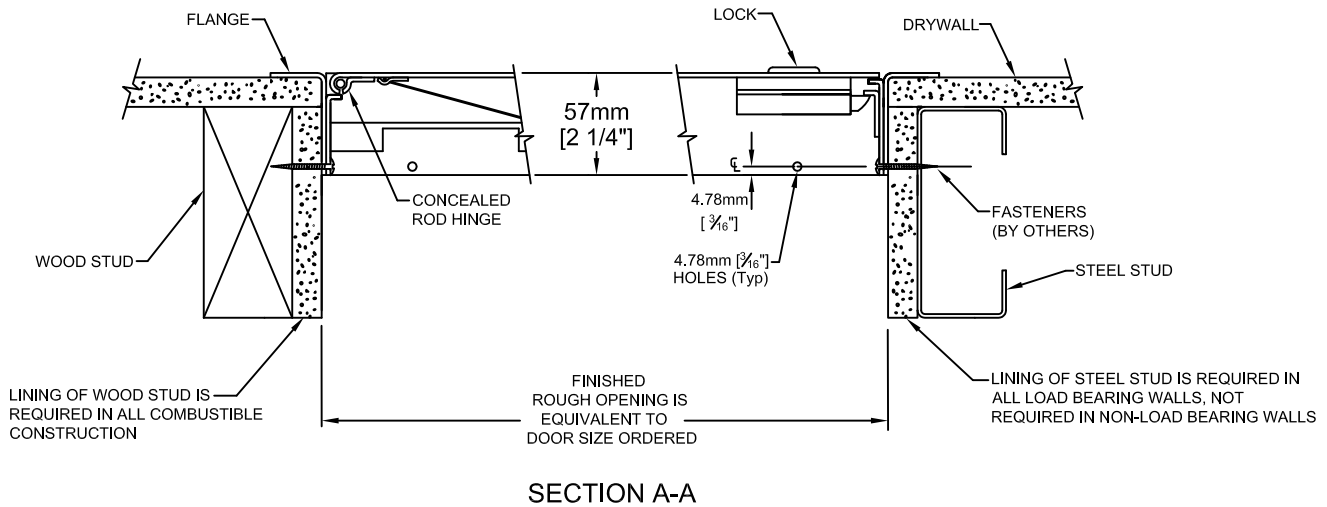
Designed for use where both fire rating and security are required.



**STANDARD CONSTRUCTION:**

- MATERIAL** - SATIN FINISH GALVANIZED (GALVANNEALED) STEEL.
- PANEL** - 2.75mm [12 ga].
- FRAME** - 2.75mm [12 ga].
- FLANGE** - EXTERIOR FLANGE WIDTH 32mm [1¼"].
- HINGE** - CONCEALED CONTINUOUS ROD HINGE.
- LOCK** - 1⅝" MORTISE PREP COMPLETE WITH MORTISE CYLINDER.
- FINISH** - RUST INHIBITIVE PRIME COAT (OFF-WHITE).

\* Specifications subject to change without notice.




PROJECT: \_\_\_\_\_

CONTRACTOR: \_\_\_\_\_

ARCH. OR ENG.: \_\_\_\_\_

DATE: \_\_\_\_\_

These drawings are the property of Maxam Metal Products Ltd. and incorporates information which is proprietary. Publication and/or public distribution in whole or in part is expressly prohibited without the prior written consent of Maxam Metal Products Ltd. The information herein remains the property of Maxam Metal Products Ltd. All rights reserved.

|              |                     |                          |   |
|--------------|---------------------|--------------------------|---|
| DWN BY<br>KB | DATE<br>Jan. / 2014 | DWG. NO.<br>Sheet 1 of 3 | REV.<br> |
|--------------|---------------------|--------------------------|---|

### INSTALLATION:

The frame is manufactured with mounting holes. Factory installed anchor straps are available for masonry, upon request. See installation instructions supplied with panel.

### WARRANTY:

One Year Limited warranty. For complete details see **Access Door** warranty document.

### ORDERING:

- PLEASE ORDER BY ROUGH OPENING SIZE.
- WHEN ORDERING THE SECOND DIMENSION GIVEN IS THE HINGE SIDE. (ie. 457mm x 610mm [18" x 24"], THE 610mm [24"] DIMENSION IS THE HINGE SIDE.
- THESE DOORS ARE NON-RETURNABLE

### FSD - STANDARD SIZES

| Rough Opening Size W x H |         | No. of Locks | Weight in kgs. | Weight in lbs. |
|--------------------------|---------|--------------|----------------|----------------|
| Metric (mm)              | Inches  |              |                |                |
| 203 x 203                | 8 x 8   | 1            | 2.61           | 5.76           |
| 305 x 305                | 12 x 12 | 1            | 5.90           | 13.00          |
| 406 x 406                | 16 x 16 | 1            | 10.43          | 23.00          |
| 457 x 457                | 18 x 18 | 1            | 13.23          | 29.16          |
| 457 x 610                | 18 x 24 | 1            | 17.64          | 38.88          |
| 457 x 762                | 18 x 30 | 1            | 22.04          | 48.60          |
| 559 x 762                | 22 x 30 | 1            | 26.94          | 59.40          |
| 610 x 610                | 24 x 24 | 1            | 23.51          | 51.84          |
| 610 x 762                | 24 x 30 | 1            | 29.39          | 64.80          |
| 610 x 914                | 24 x 36 | 1            | 35.27          | 77.76          |
| 610 x 1016               | 24 x 40 | 2            | 39.19          | 86.40          |
| 610 x 1219               | 24 x 48 | 2            | 47.17          | 104.00         |
| 914 x 914                | 36 x 36 | 2            | 53.43          | 117.80         |
| 914 x 1016               | 36 x 40 | 2            | 58.79          | 129.60         |
| 914 x 1219               | 36 x 48 | 2            | 71.03          | 156.60         |



Net Opening = **Width** minus 64mm [2½"]  
**Height** minus 51mm [2"]

### PROJECT SCHEDULE

- millimeters
- inches

| Qty | Rough Opening Size |        | Options |
|-----|--------------------|--------|---------|
|     | Width              | Height |         |
|     |                    |        |         |
|     |                    |        |         |
|     |                    |        |         |
|     |                    |        |         |
|     |                    |        |         |
|     |                    |        |         |
|     |                    |        |         |
|     |                    |        |         |
|     |                    |        |         |
|     |                    |        |         |
|     |                    |        |         |



Model FSD is designed to maintain the continuity of a fire barrier when installed in a **vertical separation**. The assembly is manufactured under the factory inspection service of Intertek (Warnock Hersey) and has a label reading: "Listed access frame and fire door assembly. **2 hour fire rating**. Vertical installation only. No temperature rise rating."

PROJECT: \_\_\_\_\_

PURCHASE ORDER: \_\_\_\_\_

CONTRACTOR: \_\_\_\_\_

APPROVED BY: \_\_\_\_\_

ARCH. OR ENG.: \_\_\_\_\_

DATE: \_\_\_\_\_

**OPTIONS:** \* - DENOTES ADDITIONAL COST.

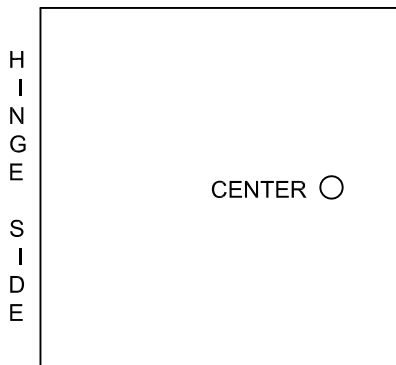
MATERIAL :-

- STANDARD MATERIAL - GALVANNEALED STEEL. SEE SHEET 1 OF 3.
- \*  - OPTIONAL MATERIAL - 304 STAINLESS STEEL WITH A NO. 4 POLISHED FINISH ON THE EXTERIOR SURFACE.
- \*  - MASONRY ANCHORS ATTACHED.

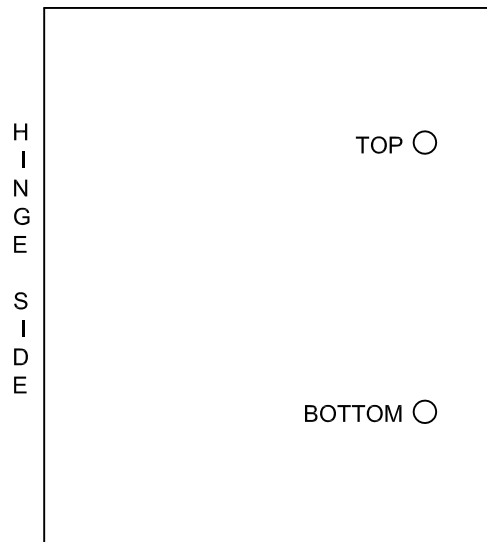
HARDWARE :-

- STANDARD HARDWARE - 1½" MORTISE PREP c/w MORTISE CYLINDER. SEE SHEET 1 OF 3.
- OPTIONAL HARDWARE - **NOTE: TWO LATCHES ARE REQUIRED ON DOORS LARGER THAN 610mm x 1219mm [24" x 36"]. SEE SHEET 2 OF 3.**
- \*  - CONTINUOUS PIANO HINGE.
- \*  - MOUNTING BRACKETS FOR ANTI-TAMPER SWITCH(ES).

ONE LATCH



TWO LATCHES



CENTER LATCH

- 1½" MORTISE PREP ONLY.

TOP LATCH

- 1½" MORTISE PREP ONLY.

BOTTOM LATCH

- 1½" MORTISE PREP ONLY.

PROJECT: \_\_\_\_\_

PURCHASE ORDER: \_\_\_\_\_

CONTRACTOR: \_\_\_\_\_

APPROVED BY: \_\_\_\_\_

ARCH. OR ENG.: \_\_\_\_\_

DATE: \_\_\_\_\_