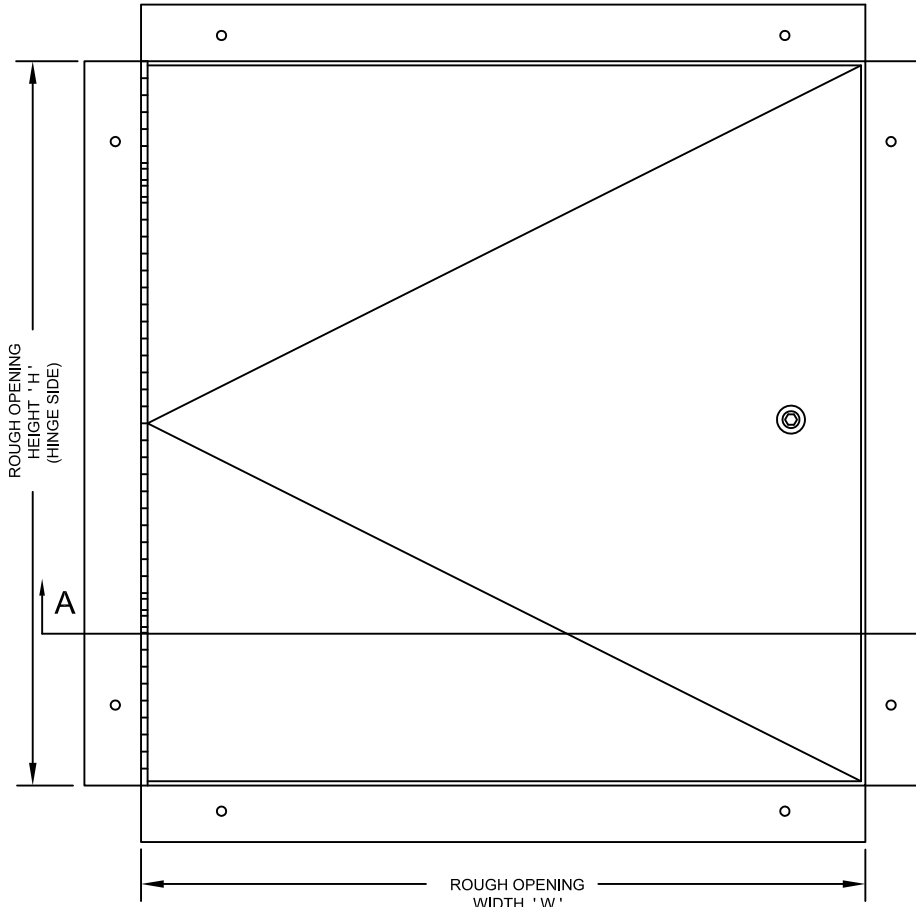


Standard 16mm [ $\frac{5}{8}$ " ] recessed panel and frame to accept architectural finish of your choice.

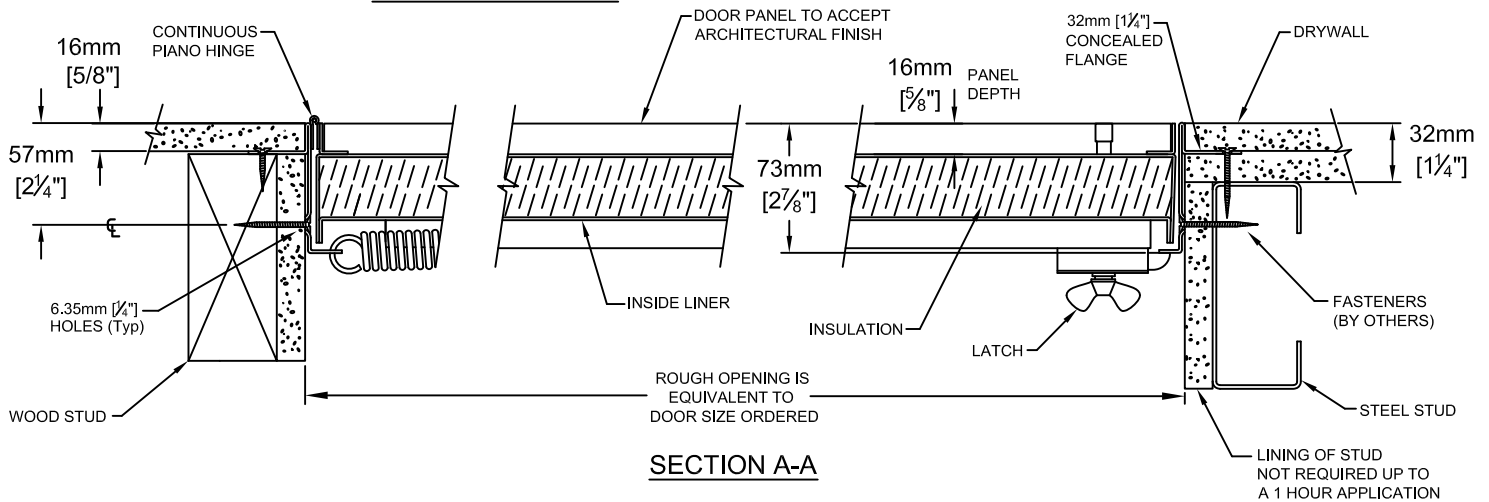
**STANDARD CONSTRUCTION:**

- MATERIAL** - SATIN FINISH GALVANIZED (GALVANNEALED) STEEL.
- PANEL** - 1.31mm [18 ga.], SELF CLOSING, RECESSED 16mm [ $\frac{5}{8}$ " ].
- LINER** - 0.85mm [22ga.]
- FRAME** - 1.61mm [16 ga.] UP TO AND INCLUDING 762mm x 1219mm [30" x 48" ], LARGER SIZES 1.99mm [14ga.]
- FLANGE** - CONCEALED FLANGE 32mm [ $1\frac{1}{4}$ " ] WIDE, RECESSED 16mm [ $\frac{5}{8}$ " ].
- HINGE** - CONTINUOUS PIANO HINGE (OPENS 175°).
- LATCH** -  $\frac{1}{4}$ " ALLEN KEY, WITH INTERIOR RELEASE.
- INSULATION** - 38mm [ $1\frac{1}{2}$ " ] HIGH TEMPERATURE.
- FINISH** - RUST INHIBITIVE PRIME COAT (OFF-WHITE).

\* Specifications subject to change without notice.



**FRONT ELEVATION**



**SECTION A-A**


PROJECT: \_\_\_\_\_

CONTRACTOR: \_\_\_\_\_

ARCH. OR ENG.: \_\_\_\_\_

DATE: \_\_\_\_\_

These drawings are the property of Maxam Metal Products Ltd. and incorporates information which is proprietary. Publication and/or public distribution in whole or in part is expressly prohibited without the prior written consent of Maxam Metal Products Ltd. The information herein remains the property of Maxam Metal Products Ltd. All rights reserved.

DWN BY KB	DATE Feb. / 2014	DWG. NO. Sheet 1 of 2	REV. 
--------------	---------------------	--------------------------	-----------------------------------------------------------------------------------------------

**INSTALLATION:**

The recessed outer concealed flange and inner frame are manufactured with mounting holes. For a square fit, keep the door panel closed while installing. Install before your finishing material is applied. See installation instructions supplied with panel.

**ORDERING:**

- WHEN ORDERING, PLEASE SPECIFY WALL OR CEILING APPLICATION.
- PLEASE ORDER BY ROUGH OPENING SIZE.
- WHEN ORDERING THE SECOND DIMENSION GIVEN IS THE HINGE SIDE. (ie. 457mm x 610mm [18" x 24"], THE 610mm [24"] DIMENSION IS THE HINGE SIDE.
- THESE DOORS ARE NON-RETURNABLE.

**OPTIONS:** \* - DENOTES ADDITIONAL COST.

\*  - 304 STAINLESS STEEL, 2b FINISH.

**WARRANTY:**

One Year Limited warranty. For complete details see **Access Door** warranty document.



Model FTA-150 wall and ceiling fire-rated panels are manufactured under the factory inspection service of Intertek (Warnock Hersey) and have a label reading: "Listed access frame and insulated fire door assembly **2 hour fire rating. Vertical and Horizontal Installation.**" Temperature rise maximum 139°C / 250°F at 30 minutes, 250°C / 450°F at 60 minutes.

**FTA-150 STANDARD SIZES**
**Single leaf construction for walls and ceilings.**

Rough Opening Size W x H		No. of Latches/ Locks	Weight in kgs.	Weight in lbs.
Metric (mm)	Inches			
305 x 305	12 x 12	1	5.67	12.50
406 x 406	16 x 16	1	8.61	19.00
457 x 457	18 x 18	1	9.97	22.00
457 x 610	18 x 24	1	12.24	27.00
559 x 762	22 x 30	1	15.87	35.00
610 x 610	24 x 24	1	14.96	33.00
610 x 762	24 x 30	1	17.69	39.00
610 x 914	24 x 36	1	20.86	46.00

↑ ↑  
 Hinge Side

Net Opening = **Width** minus 39mm [1½"]  
**Height** minus 39mm [1½"]

**PROJECT SCHEDULE**

- millimeters  
 - inches

Qty	Rough Opening Size		Options
	Width	Height	

↑  
 Hinge Side

PROJECT: \_\_\_\_\_

PURCHASE ORDER: \_\_\_\_\_

CONTRACTOR: \_\_\_\_\_

APPROVED BY: \_\_\_\_\_

ARCH. OR ENG.: \_\_\_\_\_

DATE: \_\_\_\_\_