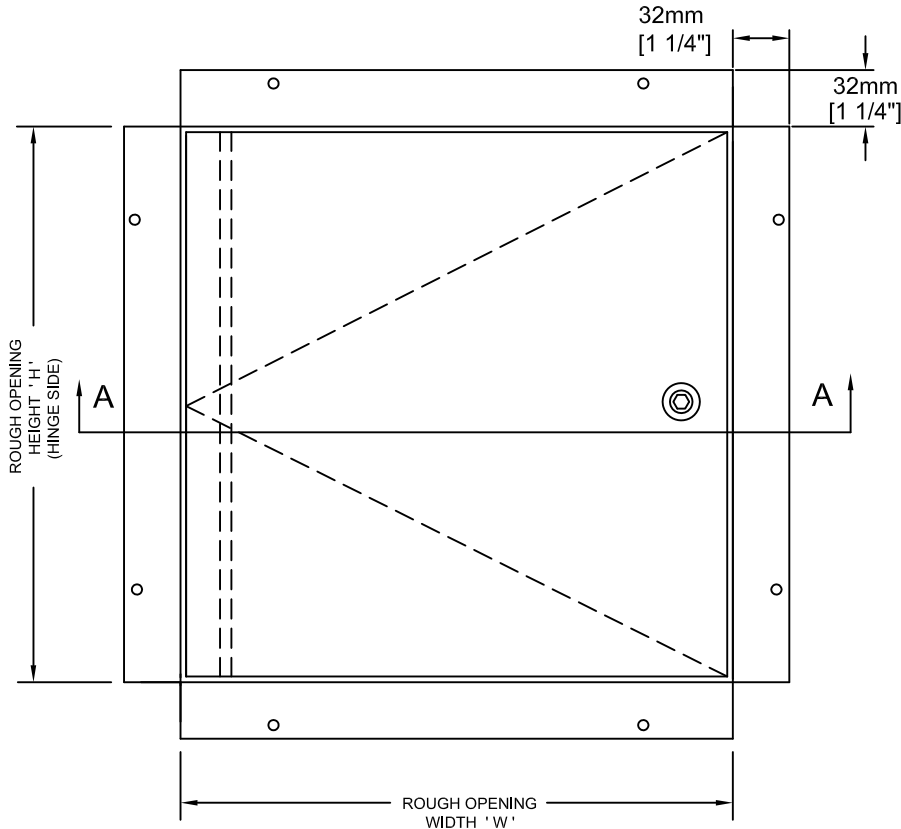


Designed to conform to the architectural design of ceiling and wall tiles.



FRONT ELEVATION

STANDARD CONSTRUCTION:

MATERIAL - SATIN FINISH GALVANIZED (GALVANNEALED) STEEL.

PANEL - 1.61mm [16 ga.].

FRAME - 1.61mm [16 ga.]

FLANGE - 32mm [1 1/4\"] WIDE RECESSED FLANGE.

HINGE - CONCEALED ROD HINGE ON DOORS UP TO 610mm x 914mm [24\" x 36\"].
- LARGER SIZES: CONTINUOUS PIANO HINGE STANDARD.

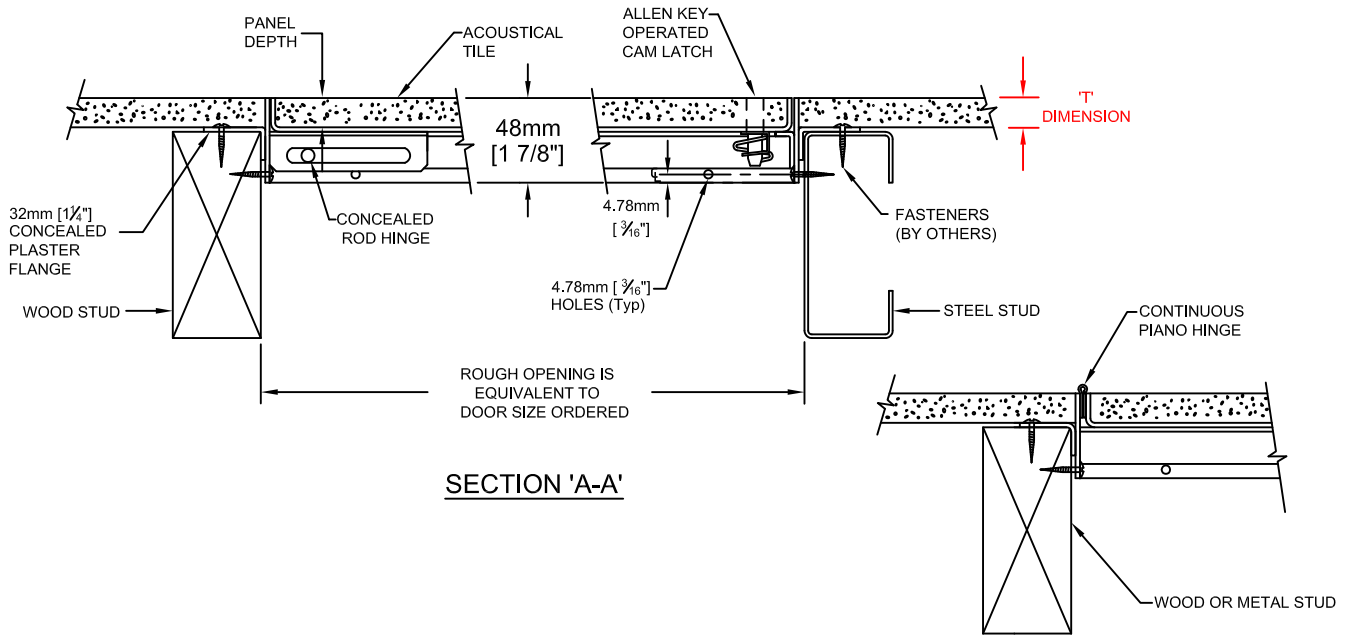
LATCH - 4.78mm [3/16\"] ALLEN KEY CAM.

FINISH - RUST INHIBITIVE PRIME COAT (OFF-WHITE).

STANDARD PANEL DEPTH : 16mm [5/8\"]

STANDARD "T" DIMENSION : 16mm [5/8\"]

* Specifications subject to change without notice.



SECTION 'A-A'

OPTIONAL - PIANO HINGE


PROJECT: _____

CONTRACTOR: _____

ARCH. OR ENG.: _____

DATE: _____

These drawings are the property of Maxam Metal Products Ltd. and incorporates information which is proprietary. Publication and/or public distribution in whole or in part is expressly prohibited without the prior written consent of Maxam Metal Products Ltd. The information herein remains the property of Maxam Metal Products Ltd. All rights reserved.

DWN BY KB	DATE Feb. / 2014	DWG. NO. Sheet 1 of 2	REV. 
--------------	---------------------	--------------------------	---

