

Stainless Steel, Sanitary environments and for resistance to corrosion.

STANDARD CONSTRUCTION:

MATERIAL - 304 stainless steel.

PANEL - 1.61mm [16 ga.]

FRAME - 1.31mm [18 ga.]

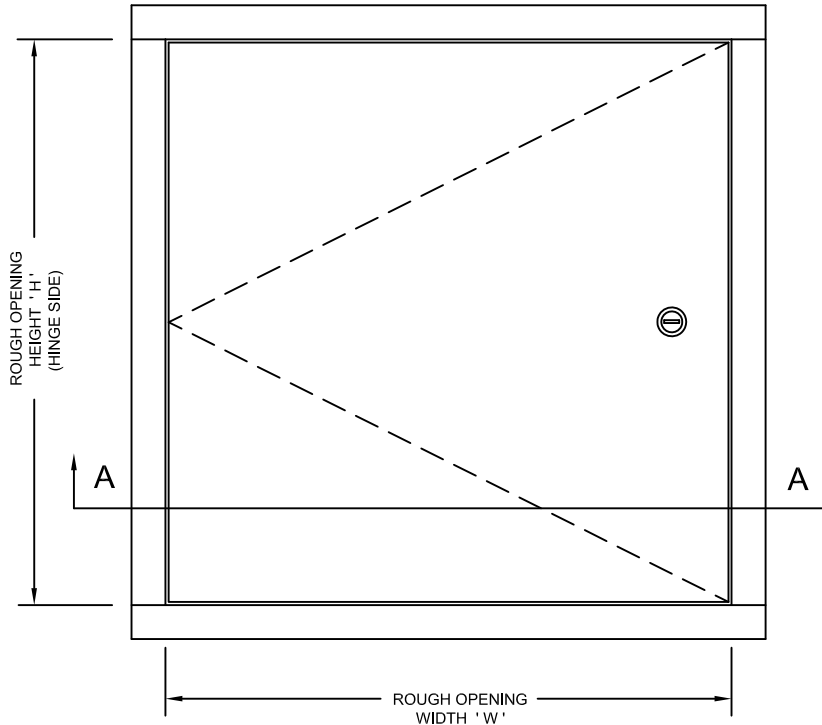
FLANGE - 19mm [$\frac{3}{4}$ "] UP TO AND INCLUDING 914mm x 914mm [36" x 36"], 32mm [$1\frac{1}{4}$ "] GREATER THAN 914mm x 914mm [36" x 36"].

HINGE - CONCEALED STAINLESS STEEL SPRING HINGES (OPENS TO 175°). NUMBER OF HINGES VARIES WITH SIZE OF DOOR.

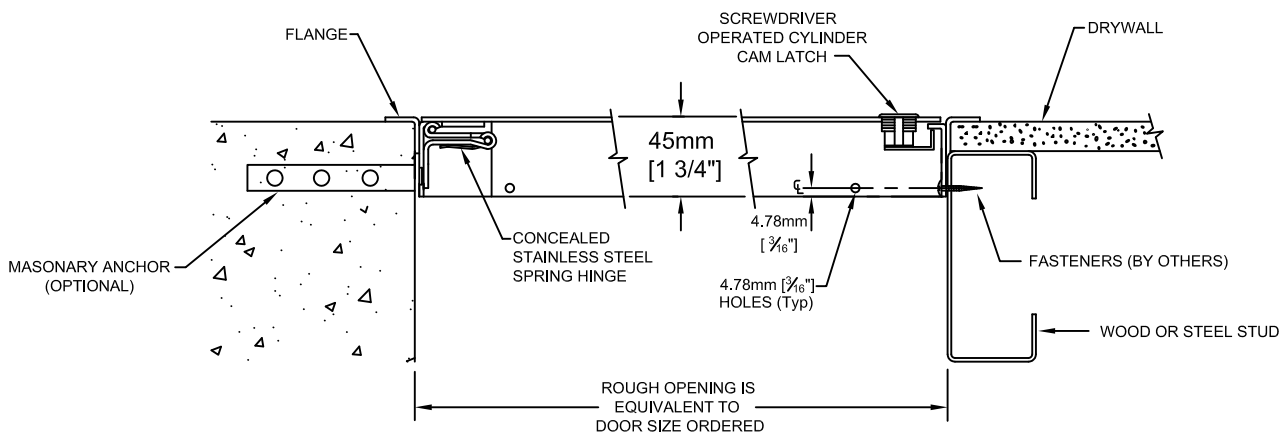
LATCH - SCREWDRIVER OPERATED CYLINDER CAM LATCH. NUMBER OF LATCHES VARIES WITH SIZE OF DOOR.

FINISH - NO. 4 POLISHED STAINLESS STEEL FINISH ON THE EXTERIOR SURFACE.

* Specifications subject to change without notice.



FRONT ELEVATION



SECTION A-A


PROJECT: _____

CONTRACTOR: _____

ARCH. OR ENG.: _____

DATE: _____

These drawings are the property of Maxam Metal Products Ltd. and incorporates information which is proprietary. Publication and/or public distribution in whole or in part is expressly prohibited without the prior written consent of Maxam Metal Products Ltd. The information herein remains the property of Maxam Metal Products Ltd. All rights reserved.

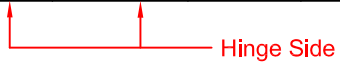
DWN BY KB	DATE Feb. / 2014	DWG. NO. Sheet 1 of 2	REV. 
--------------	---------------------	--------------------------	-----------------------------------------------------------------------------------------------

INSTALLATION:

The frame is manufactured with mounting holes. Factory installed anchor straps are available for masonry upon request.

NSS - STANDARD SIZES

In Stock	Rough Opening Size W x H		No. of Latches	Weight in kgs.	Weight in lbs.
	Metric (mm)	Inches			
■	152 x 152	6 x 6	1	1.13	2.50
■	203 x 203	8 x 8	1	1.70	3.75
	203 x 305	8 x 12	1	2.15	4.75
■	254 x 254	10 x 10	1	2.24	4.95
■	305 x 305	12 x 12	1	2.63	5.80
	305 x 406	12 x 16	1	3.74	8.25
	305 x 457	12 x 18	1	3.96	8.75
	305 x 610	12 x 24	2	4.98	11.00
■	356 x 356	14 x 14	1	3.62	8.00
	356 x 508	14 x 20	1	4.98	11.00
■	406 x 406	16 x 16	1	4.53	10.00
	406 x 508	16 x 20	1	5.55	12.25
	406 x 610	16 x 24	2	6.46	14.25
■	457 x 457	18 x 18	1	5.55	12.25
	457 x 610	18 x 24	2	6.91	15.25
	508 x 508	20 x 20	3	6.57	14.50
	508 x 610	20 x 24	4	7.48	16.50
	508 x 762	20 x 30	4	9.29	20.50
	559 x 559	22 x 22	3	7.71	17.00
	559 x 762	22 x 30	4	10.09	22.25
	559 x 914	22 x 36	4	11.79	26.00
■	610 x 610	24 x 24	4	8.84	19.50
	610 x 762	24 x 30	4	10.77	23.75
	610 x 914	24 x 36	4	12.70	28.00
	610 x 1219	24 x 48	5	17.69	39.00
	762 x 762	30 x 30	6	13.04	28.75
	762 x 914	30 x 36	6	16.66	36.75
	762 x 1219	30 x 48	7	21.20	46.75
	762 x 1524	30 x 60	8	25.96	57.25
	813 x 813	32 x 32	6	14.62	32.25
	914 x 914	36 x 36	6	19.27	42.50
	914 x 1219	36 x 48	7	24.72	54.50
	914 x 1524	36 x 60	8	30.05	66.25
	1067 x 1067	42 x 42	9	25.17	55.50
	1067 x 1524	42 x 60	10	34.36	75.75
	1219 x 1219	48 x 48	9	31.63	69.75
	1219 x 1524	48 x 60	10	38.55	85.00



Net Opening = **Width minus 51mm [2"]**
Height minus 29mm [1 1/8"]

OPTIONS:

* - DENOTES ADDITIONAL COST.

- * - 1/4" ALLEN KEY CYLINDER CAM LATCH.
- * - NON-LOCKING TWO POSITION HANDLE.
- * - CYLINDER KEY LOCK (NON RE-KEYABLE) KEYED ALIKE.
- * - 1 1/8" MORTISE PREP ONLY.
- * - 1 1/8" MORTISE PREP COMPLETE WITH MORTISE CYLINDER.
- * - CUSTOM FLANGE WIDTH _____.
- * - MASONRY ANCHOR STRAPS ATTACHED

ORDERING:

- PLEASE ORDER BY ROUGH OPENING SIZE.
 - WHEN ORDERING THE SECOND DIMENSION GIVEN IS THE HINGE SIDE. (ie. 457mm x 610mm [18" x 24"], THE 610mm [24"] DIMENSION IS THE HINGE SIDE.

- THESE DOORS ARE NON-RETURNABLE.

WARRANTY:

One Year Limited warranty. For complete details see **Access Door** warranty document.

PROJECT SCHEDULE

- millimeters
 - inches

Qty	Rough Opening Size		Options
	Width	Height	



PROJECT: _____

CONTRACTOR: _____

ARCH. OR ENG.: _____

DATE: _____

PURCHASE ORDER: _____

APPROVED BY: _____