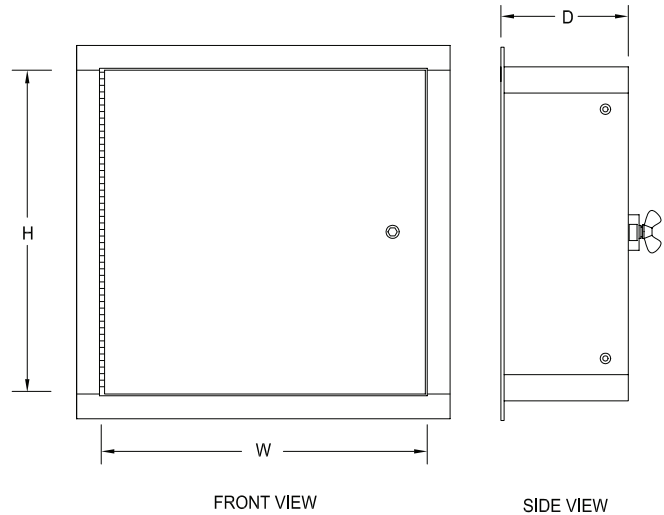


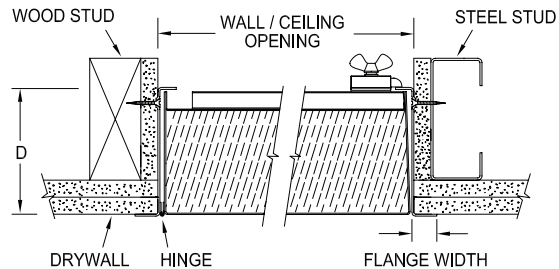
**VAN-MET® MODEL FCI-400 - Three Hour Fire-Rated** manufactured to the **VAN-MET®** design standard  
**High Temperature, Insulated, Wall or Ceiling Application**



Model FCI-400 wall and ceiling fire-rated panels are manufactured under the factory inspection service of Intertek (Warnock Hersey) and have a label reading: "Listed access frame and insulated fire door assembly **3 hour fire rating. Vertical and Horizontal Installation.** Temperature rise maximum 90° C/162° F at 60 minutes."



- Designed for use in an electrical shaft wall or ceiling application where control of temperature rise and heat transmission is required.
- Offers protection to junction boxes or at access points in shafts and protects electrical conductors while limiting the temperature rise to less than 90° C/162° F at 60 minutes.
- Tested in both vertical and horizontal positions for the temperature rise.
- The largest net size openings available, making these doors ideal when installation or removal of equipment is a consideration in a fire-rated shaft wall or ceiling.
- Available in any size from 305mm x 203mm (12" x 8") up to 1219mm x 1524mm (48" x 60") for vertical (wall) applications.
- Available in any size from 305mm x 203mm (12" x 8") up to 914mm x 914mm (36" x 36") for horizontal (ceiling) applications.
- Exterior appearance is compatible with the non-rated and fire-rated Van-Met access door line, so uniformity of design is maintained when the doors are installed in the same building.



**Please note:** The key design feature of Van-Met Insulated Access Doors is the protection offered through temperature rise and heat transfer times.

**Material**

Satin finish galvanized steel  
Frame - 1.61mm (16ga) steel up to and including 762mm x 1219mm (30" x 48")  
Frame - 1.99mm (14ga) steel greater than 762mm x 1219mm (30" x 48")  
Panel - 1.31mm (18ga)  
Liner - 0.85mm (22ga)

**Insulation**

The door panel contains 102mm (4") of high temperature insulation material between a 1.31mm (18ga) steel panel and a 0.85mm (22ga) steel liner.

**Non-Combustibility Classification:**

CAN/ULC S114, ASTM E136  
CAN/ULC S102  
ASTM E84, UL723  
Flame Spread 0  
Fuel Contribution 0  
Smoke Developed 0

**Finish**

The paint finish is an electrostatically applied rust inhibitive prime coat finish.

**Hinge**

The continuous piano hinge is placed on the long side of the door ("H" dimension).

**Panel Closer**

The automatic panel closer will close and latch the door from an open position of approximately 90° as required by code.

**All Van-Met® Fire-Rated Access Doors are manufactured to this criteria and do not require any auxiliary springs.**

**Latch**

The standard factory installed latch is a flush mount 1/4" allen key. All fire-rated locks are self-latching.

**Optional Latch Feature**

Interior latch release mechanism available upon request.

**Optional Lock**

1 1/8" mortise prep complete with mortise cylinder

**Optional**

1 1/8" mortise prep only

**Flange**

Exterior flange  
Width - 22mm (7/8") up to and including 914mm x 914mm (36" x 36")  
Width - 32mm (1 1/4") when greater than 914mm x 914mm (36" x 36")

**Frame Depth**

"D" = 121mm (4 3/4")

**Ordering**

When ordering, please specify wall or ceiling application. Doors labeled accordingly. Please order by rough opening size.

**Note:** When specifying or quoting projects, clarify if sizes given are net (clear) openings or rough opening sizes. These doors are non-returnable.

**Installation**

The door frame is manufactured with mounting holes. All holes must be securely fastened on all four sides.

See size and weight chart on page 49.