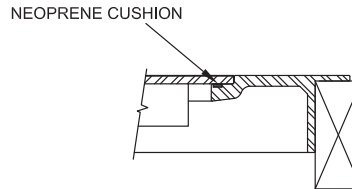
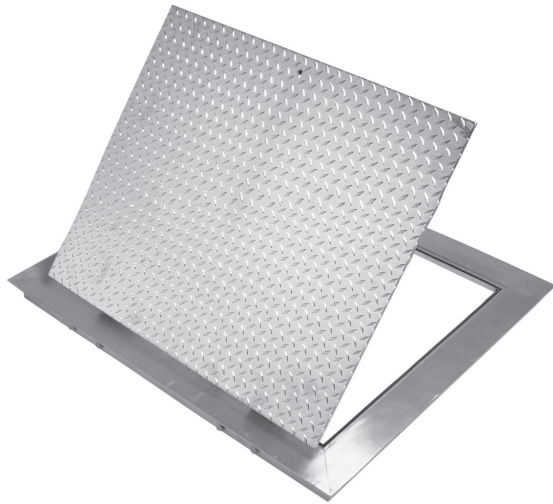


MODEL ASF - Aluminum Checker Plate Floor Door, Single Leaf Panel

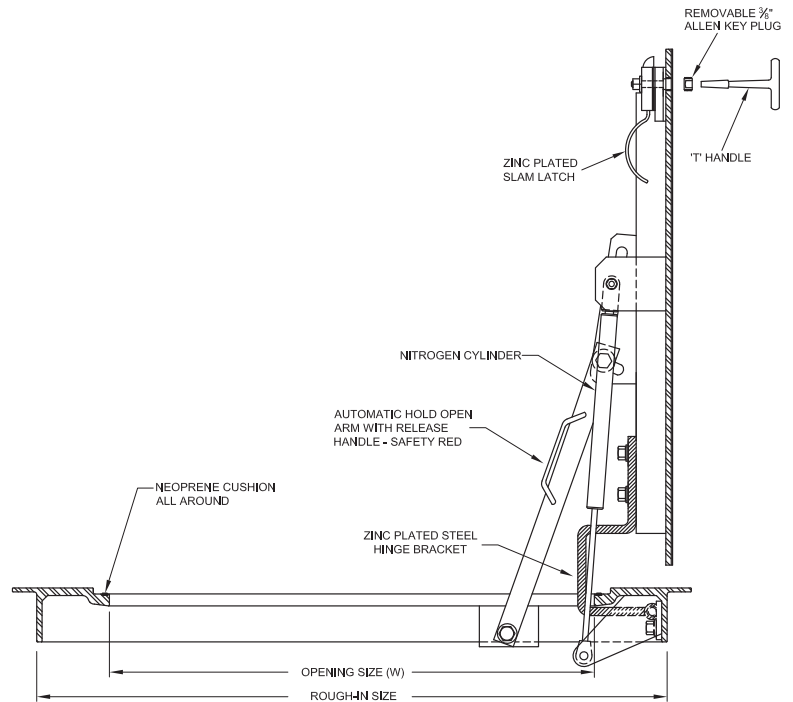


FLANGE DETAIL

- Aluminum checker plate panel and 6061 aluminum alloy frame offers years of maintenance free service.
- The panel is counter-balanced for ease of operation.
- Heavy-duty zinc plated steel hinges constructed with stainless steel pivot points offer protection from corrosion, allowing for years of trouble-free service.
- Hold open arm is powder coated safety red and is manufactured from steel for strength and rigidity.
- Non-standard sizes readily available upon request.

Size Chart – Single Leaf Construction				
Opening Size Measurements		Hinge side		
Model	Metric (mm) (W x L)	Inches (W x L)	Wt. in Kgs.	Wt. in Lbs.
ASF-0	610 x 914	24 x 36	34	75
ASF-1	610 x 610	24 x 24	30	66
ASF-2	762 x 762	30 x 30	39	85
ASF-3	914 x 762	36 x 30	43	95
ASF-4	914 x 914	36 x 36	48	106
ASF-5	1067 x 1067	42 x 42	62	136

Other sizes are available upon request.



Door Panel

6.35mm (1/4") aluminum checker plate

Live Load

700 kg/sq metre (150 lb/sq.ft.)

Frame

8mm (5/16") nominal 6061 – T6 extruded aluminum with built in neoprene cushion

Hinge

Zinc plated steel hinges, complete with stainless steel pivot points

Latch

Zinc plated steel slam latch with a removable cover plug, operable from the top side by a removable "T" handle and the underside by a spoon handle.

Frame Depth

63.5mm (2 1/2")

Panel Operator

Nitrogen cylinder(s) designed to counter-balance the door panel

Hold Open Arm

Automatically locks the door panel in its 90° open position and is painted safety red

Installation

Provided with anchor bolts for cast-in-place applications or to bolt door into wood framing

Rough-In Size

178mm (7") greater than the opening sizes in both W and L (hinge side) dimension

Ordering

Please clarify if ordering by rough-in size or opening size.

The second number is the hinge side.

Note: Floor doors are non-returnable.

Guarantee

Manufacturer shall guarantee floor door against defects in material or workmanship for five years from date of shipping.