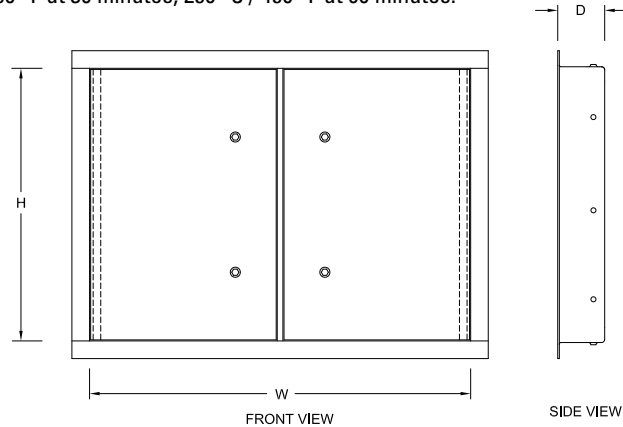


## VAN-MET<sup>®</sup> MODEL FDL-150 - Two Hour Fire-Rated Insulated for Wall or Ceiling Application

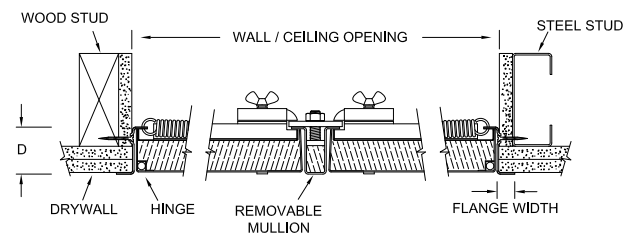
manufactured to the **Van-Met<sup>®</sup>** design standard



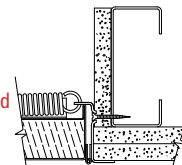
Model FDL-150 wall and ceiling fire-rated panels are manufactured under the factory inspection service of Intertek (Warnock Hersey) and have a label reading: "Listed access frame and insulated fire door assembly **2 hour fire rating. Vertical and Horizontal Installation.** Temperature rise maximum 139° C / 250° F at 30 minutes, 250° C / 450° F at 60 minutes."



- The largest two hour ceiling door available on the market, offering architects and engineers unprecedented flexibility in designing.
- Tested and listed by Intertek (Warnock Hersey) for a two hour fire rating.
- Meets temperature rise requirements for a wall application in the United States at 250° F at 30 minutes and 450° F at 60 minutes. In Canada at 250° C at 60 minutes.
- Removable center mullion allows for a larger free area.
- Double leaf reduces the swing radius and clears objects that interfere with the opening of the door.
- Designed to provide additional strength when large rigid doors are necessary.
- Larger and smaller door sizes are available with the double leaf feature.
- Optional: Central two point latch operator (phone for details).
- Maximum hinge length in a double leaf door in a ceiling position is 1219mm (48") and in a wall position 1524mm (60") is the maximum.



**Optional**  
Piano hinge is required after a certain size (see specifications).



### Materials

Satin finish galvanized steel or 304 stainless steel  
 Frame – 1.61mm (16ga) steel up to and including 762mm x 1219mm (30" x 48")  
 Frame – 1.99mm (14ga) steel greater than 762mm x 1219mm (30" x 48")  
 Panel – 1.31mm (18ga)  
 Liner – 0.85mm (22ga)

### Insulation

The door panel contains 38mm (1 1/2") of high temperature insulation material between a 1.31mm (18ga) steel panel and a 0.85mm (22ga) steel liner.

### Non-Combustibility Classification:

CAN/ULC S114, ASTM E136  
 CAN/ULC S102  
 ASTM E84, UL723  
 Flame Spread 0  
 Fuel Contribution 0  
 Smoke Developed 0

### Finishes

The paint finish is a rust inhibitive off-white prime coat or a No. 4 polished stainless steel finish on the exterior surface.

### Standard

Removable center mullion

### Hinges

The concealed continuous rod hinge is designed to secure the door panel. The hinge is placed on the "H" dimension.

### Optional Hinge

Continuous piano hinge  
**Note:** Greater than 1219mm (48") in a wall position a continuous piano hinge is standard.

### Panel Closer

The automatic panel closer will close and latch the door from an open position of approximately 90° as required by code.

### Latch

The standard factory installed latch is a flush mount 1/4" allen key. All fire-rated locks are self-latching and include an interior latch release.

### Optional Latches

Raised knurled knob  
 Non-locking handle

### Optional Lock

1 1/8" mortise prep complete with mortise cylinder

1 1/8" mortise prep only

### Flange

Exterior flange  
 Width - 22mm (7/8") up to and including 914mm x 914mm (36" x 36")  
 Width - 32mm (1 1/4") when greater than 914mm x 914mm (36" x 36")

### Frame Depth

"D" = 57mm (2 1/4")

### Ordering

When ordering, please specify wall or ceiling application. Please order by rough opening size. These door are non-returnable.

### Installation

The frame is manufactured with mounting holes. Factory installed anchor straps are available for masonry upon request.