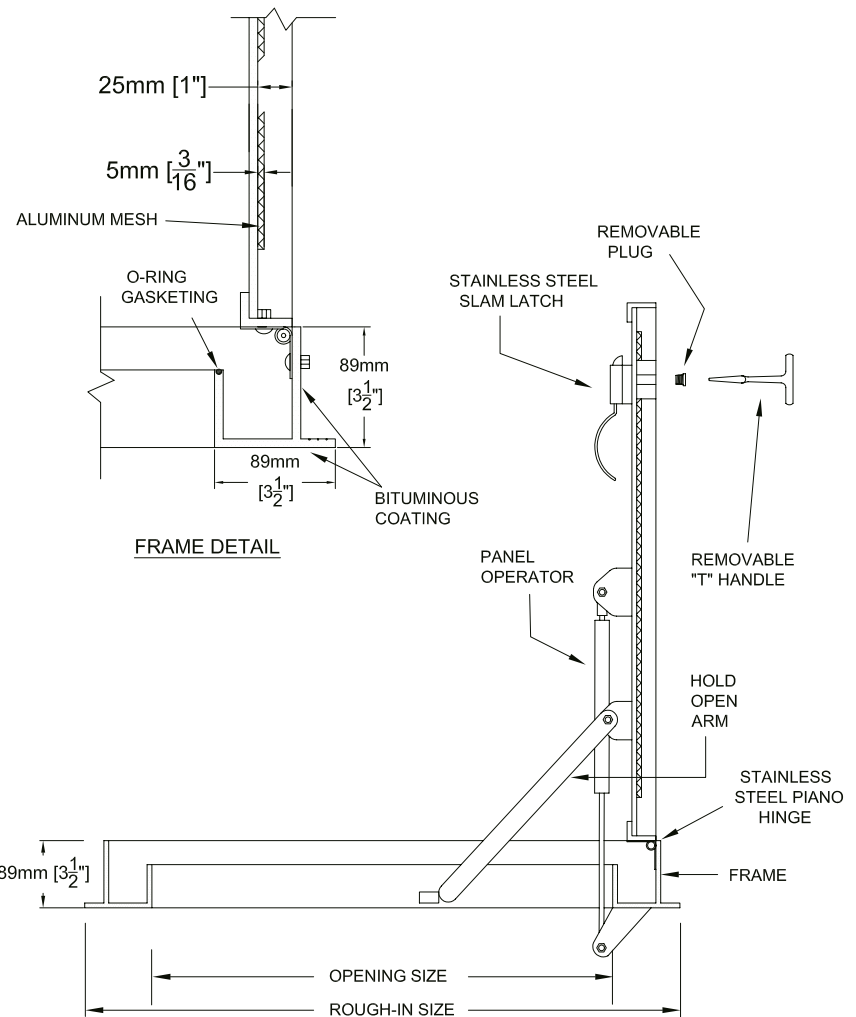


MODEL PFD - Aluminum Pan Floor Door



- MAXAM's PFD floor doors are recessed 25mm (1") to accept all types of thicker floor finishing materials.
- Each door is counter-balanced at the time of manufacturing for ease of opening.
- Please specify type and weight (pounds per square foot) of in-fill material.

Single Leaf Size Chart		
Opening Size Measurements		Hinge side
Model	Metric (mm) (W x L)	Inches (W x L)
PFD-1	610 x 610	24 x 24
PFD-2	762 x 762	30 x 30
PFD-3	914 x 762	36 x 30
PFD-4	914 x 914	36 x 36
PFD-5	1067 x 1067	42 x 42
PFD-6	762 x 1219	30 x 48

Other sizes are available upon request.

Door Panel

6.35mm (1/4") aluminum plate recessed 25mm (1") to accept floor covering.
Door panel comes complete with aluminum mesh.
Specify in-fill material and weight in pounds per square foot.

Options for Door Panel

Chrome plated brass-lifting ring
Bituminous coating inside panel

Live Load

700 kg/sq metre (150lbs sq./ft.)

Frame

6.35mm (1/4") aluminum alloy complete with 25mm (1") anchor flange, built in neoprene cushion and bituminous coating on outside of frame

Option for Frame

Drain coupling in back right-hand corner
Grounding Lug attached to frame

Hinge

Continuous 316 stainless steel alloy piano hinge

Latch

316 stainless steel slam latch complete with a removable cover plug, operable from the top side by a removable "T" handle and the underside by a spoon handle.

Frame Depth

89mm (3 1/2")

Panel Operator

Nitrogen cylinder(s) 316 stainless steel alloy for corrosive conditions

Hold Open Arm

Stops downward motion of door panel when open at 90°

Rough-In Size

178mm (7") greater than the opening sizes in both W and L (hinge side) dimensions

Ordering

The second number is the hinge side.
Please clarify if ordering by rough-in size or opening size.
Please specify type and weight (pounds per square foot) of in-fill material.

Note: Pan Floor Doors are non-returnable.

Guarantee

Manufacturer shall guarantee floor door against defects in material or workmanship for five years from date of shipping.