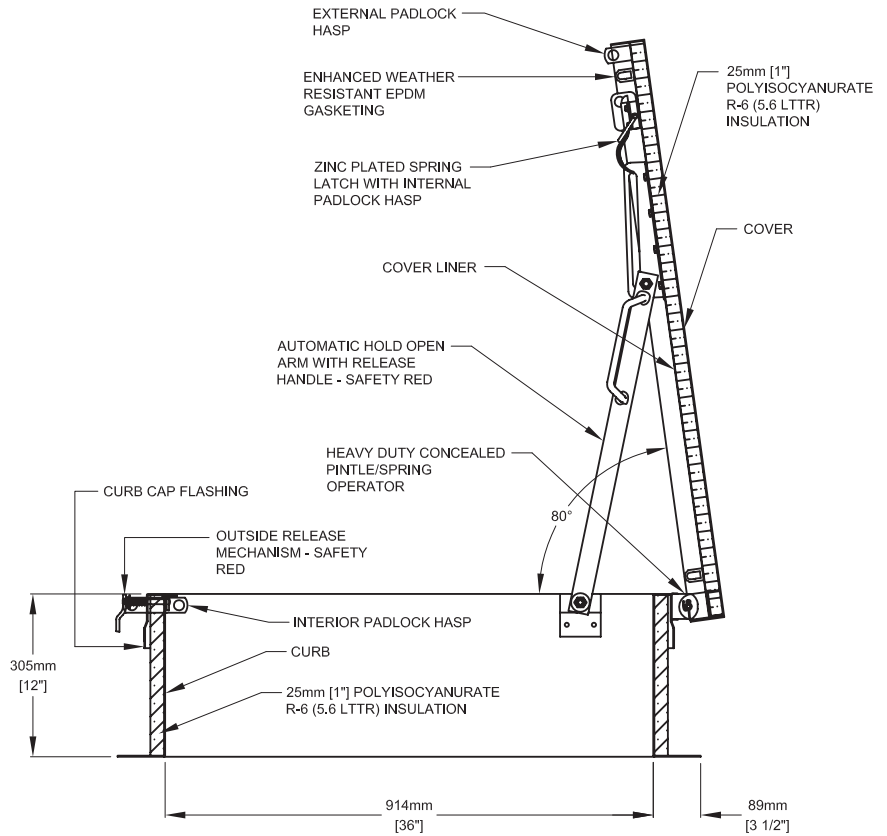


ALUMINUM LID, STEEL CURB ROOF HATCH MODEL RSA-1 INSULATED – FOR LADDER ACCESS

Size: 914mm x 762mm (3' - 0" x 2' - 6")



- Complete with a steel curb to integrate with the roof system and an aluminum lid, which offers ease of use and low maintenance.
- Operable from the inside by a handle and the outside with a weather proof push button release mechanism.
- The spring hinge design offers a larger free area when the roof hatch is in the open position.
- Heavy-duty concealed spring hinges counterbalance the cover, allowing for easy opening and closing of the hatch.
- Enhanced EPDM weather gasketing, 25 mm (1") polyisocyanurate insulation on the curb and inside lid cover, ensuring weather tightness and energy efficiency.
- The lid has no exposed hardware, thus eliminating areas where water penetration and corrosion could occur.
- The external padlock hasp is designed to have the lock secured under the lid to protect it from the elements.
- Designed for ladder access.



Cover

2.05mm (12ga) aluminum, designed to be operable internally and externally

Cover Insulation

25mm (1") polyisocyanurate R-6 (5.6 LTTR) insulation

Cover Liner

2.05mm (12ga) aluminum

Latch

Stainless steel spring latch with padlock hasps

Curb Frame

305mm (12") high, 1.99mm (14ga) satin finish galvanized steel

Curb Cap Flashing

1.99mm (14ga) satin finish galvanized steel with all exposed joints welded to ensure watertight construction

Curb Insulation

25mm (1") polyisocyanurate R-6 (5.6 LTTR) insulation

Mounting Flange

Width 89mm (3 1/2") complete with 11mm (7/16") mounting holes

Cover Operator

Heavy duty concealed pintle/spring operators with a 4.77mm (3/16") aluminum hinge bracket assembly.

Automatic Hold Open Arm

Painted safety red with release handle

Weather Gasket

Enhanced weather resistant EPDM gasketing.

Locking Mechanism

Internal and external padlock hasps

Finishes

Cover: mill finish aluminum
Curb: grey primer

Ordering

The second number is the hinge side. Frame into the size of the roof hatch ordered. Contact us at MAXAM for more details.

Guarantee

Manufacturer shall guarantee roof hatch against defects in material or workmanship for five years from date of shipping.

Accessories

Safety Grab Handle
Ladder
Safety Post
Safety Rail System