

INSTALLATION INSTRUCTIONS

MAXAM ROOF HATCHES

1. COVER IS SPRING LOADED.

Do not open hatch until it is to be installed and is in normal horizontal position.

2. Position the roof hatch as follows:

a). When installation is over a ladder and the hatch is a 36" x 30", 36" x 36" with 90 degrees opening cover, the hinge side of the hatch should be placed opposite the ladder side (hinge side at the back of the climber).

b). When installation is over a ship's ladder or stairway, the automatic hold open / release arm should be at the top of the stairway.

3. Check that the frame is level to the lid and not twisted or racked due to an uneven mounting surface. Shim under the mounting flange, if required, to be sure cover(s) close properly onto the frame.

4. Secure the hatch to the roof deck through holes provided in the base mounting flange using appropriate fasteners.

5. Complete the installation in accordance with accepted roofing industry practice.

a). For single ply roofing, apply adhesive and fold over 4" to 6" of the top edge of the membrane and insert it under the roof hatch counter flashing. Complete all sides. With a screwdriver and hammer bend VAN-CLIP tabs inward to hold membrane in place.

b). For built-up roofing, install a cant block around the curb. Run roofing plies to the top of the cant and cut off. Apply two layers of No. 15 felt on the curb under the flashing, extending beyond the outside base of the cant block. Secure the felts with alternate troweled coats of finishing cement. **DO NOT BEND VAN-CLIPS INWARD.**

6. Roof Hatches come with a grey oxide factory prime coat and should receive a finish top coat.



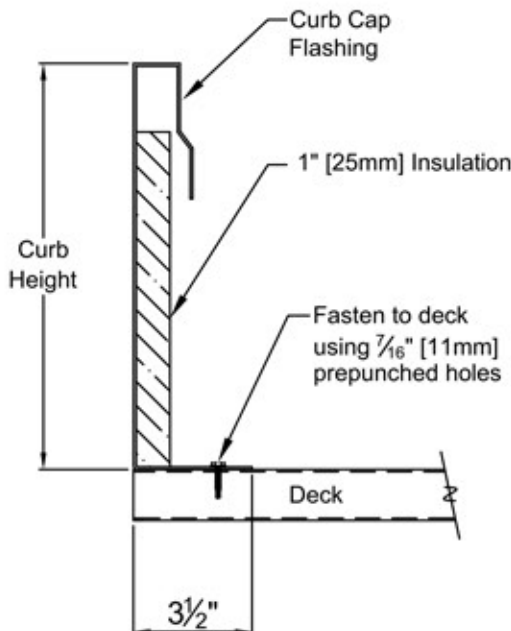
1" [25mm] Curbed Roof Hatch Installation Instructions

WARNING: "COVER IS SPRING LOADED" Do not depress outside release mechanism until hatch is to be installed and is in normal horizontal position.

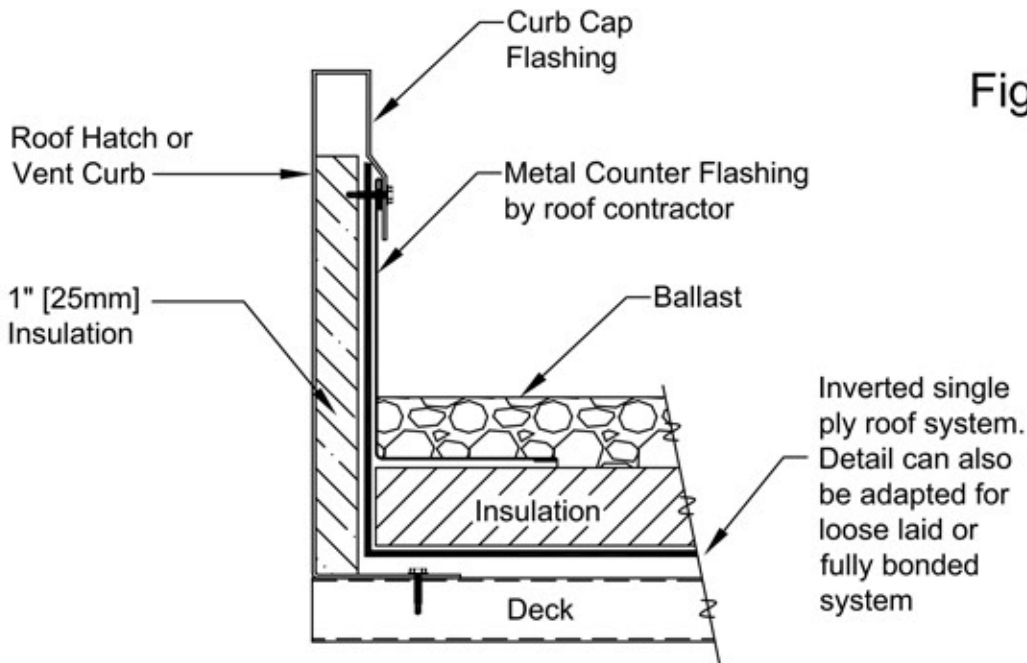
1. POSITIONING OF ROOF HATCH.

- When installing on an opening over a ladder, position the roof hatch with the hinge side opposite the ladder side (hinge side at the back of the climber).
 - When installing on an opening over a ladder and the hinge side is 90° to the ladder, position the roof hatch so that the automatic hold open arm with release handle is on the ladder side.
 - When installing on an opening over a stairway, the automatic hold open arm with release handle should be at the head of the stairway.
- Make sure that the roof hatch frame is positioned evenly on a flat plane and not twisted or racked due to an uneven mounting surface. Shim under mounting flange, if required, to be sure cover(s) close properly on the curb frame.
 - Secure the roof hatch to the roof deck through mounting holes provided in the base flange using appropriate fasteners. (See Fig. 1)

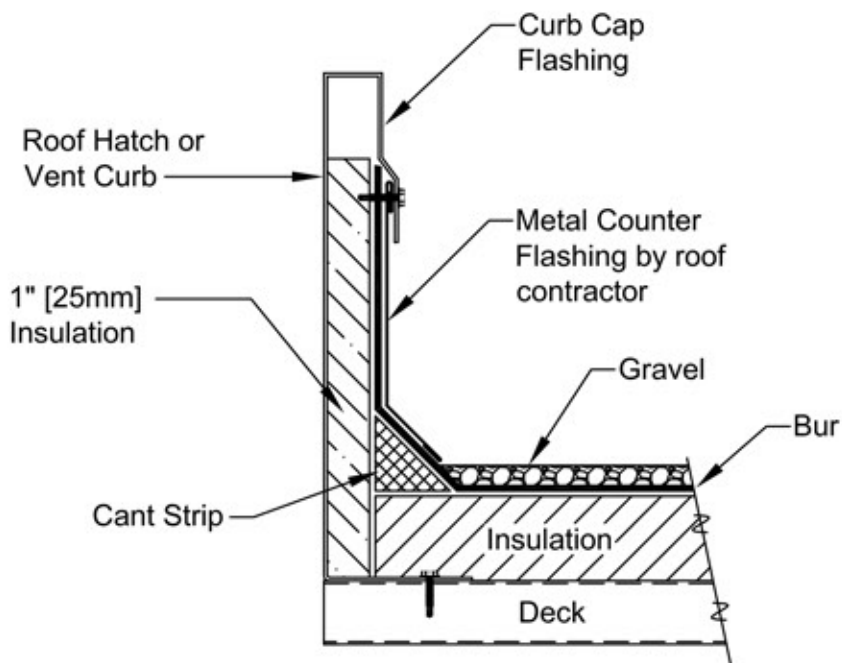
Fig. 1



- Complete the installation in accordance with accepted roofing industry practice. See Fig. 2 and 3 for suggested methods.



**SUGGESTED CURB FLASHING DETAIL
FOR SINGLE PLY ROOFING SYSTEM**
(Adaptable for fully bonded, loose laid and inverted systems)



**SUGGESTED CURB FLASHING DETAIL
FOR BUILT-UP ROOFING**
(Detail can be adapted for inverted roof system)



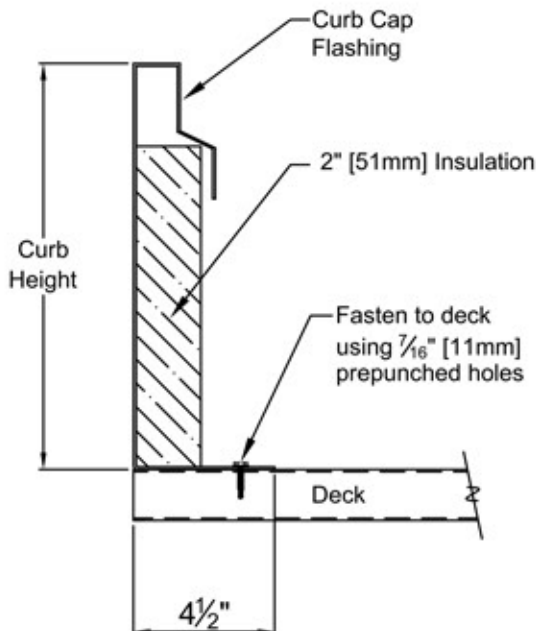
2" [51mm] Curbed Roof Hatch Installation Instructions

WARNING: "COVER IS SPRING LOADED" Do not depress outside release mechanism until hatch is to be installed and is in normal horizontal position.

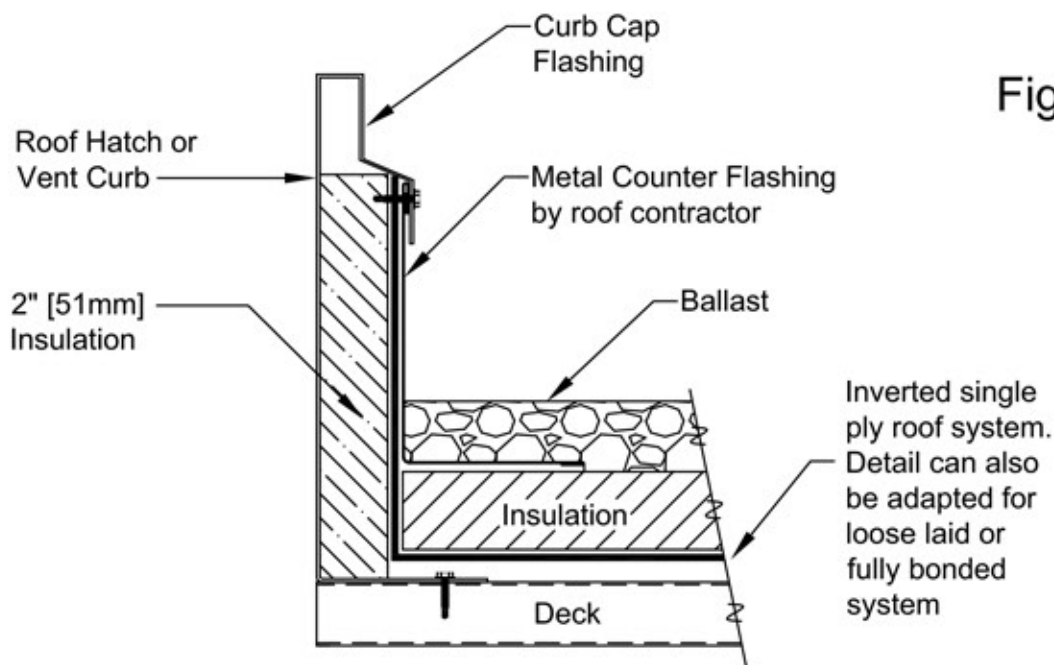
1. POSITIONING OF ROOF HATCH.

- When installing on an opening over a ladder, position the roof hatch with the hinge side opposite the ladder side (hinge side at the back of the climber).
 - When installing on an opening over a ladder and the hinge side is 90° to the ladder, position the roof hatch so that the automatic hold open arm with release handle is on the ladder side.
 - When installing on an opening over a stairway, the automatic hold open arm with release handle should be at the head of the stairway.
- Make sure that the roof hatch frame is positioned evenly on a flat plane and not twisted or racked due to an uneven mounting surface. Shim under mounting flange, if required, to be sure cover(s) close properly on the curb frame.
 - Secure the roof hatch to the roof deck through mounting holes provided in the base flange using appropriate fasteners. (See Fig. 1)

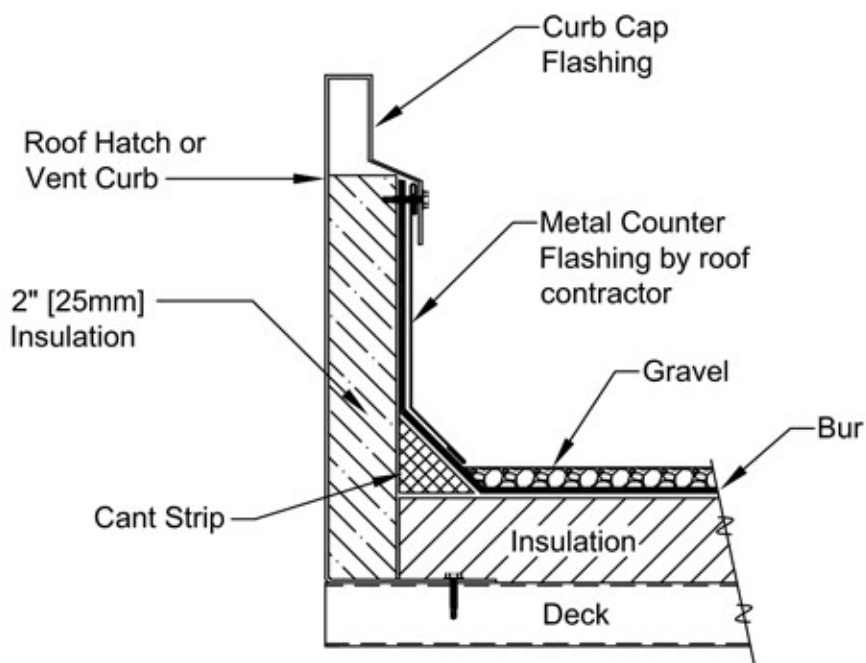
Fig. 1



- Complete the installation in accordance with accepted roofing industry practice. See Fig. 2 and 3 for suggested methods.



**SUGGESTED CURB FLASHING DETAIL
FOR SINGLE PLY ROOFING SYSTEM**
(Adaptable for fully bonded, loose laid and inverted systems)



**SUGGESTED CURB FLASHING DETAIL
FOR BUILT-UP ROOFING**
(Detail can be adapted for inverted roof system)