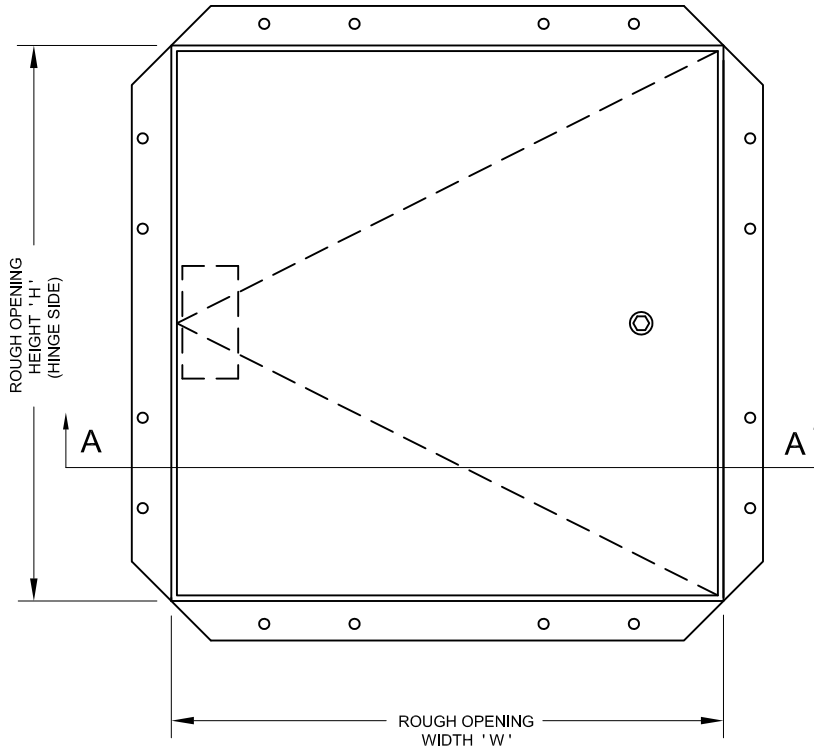


Designed with a galvanized steel drywall bead flange.

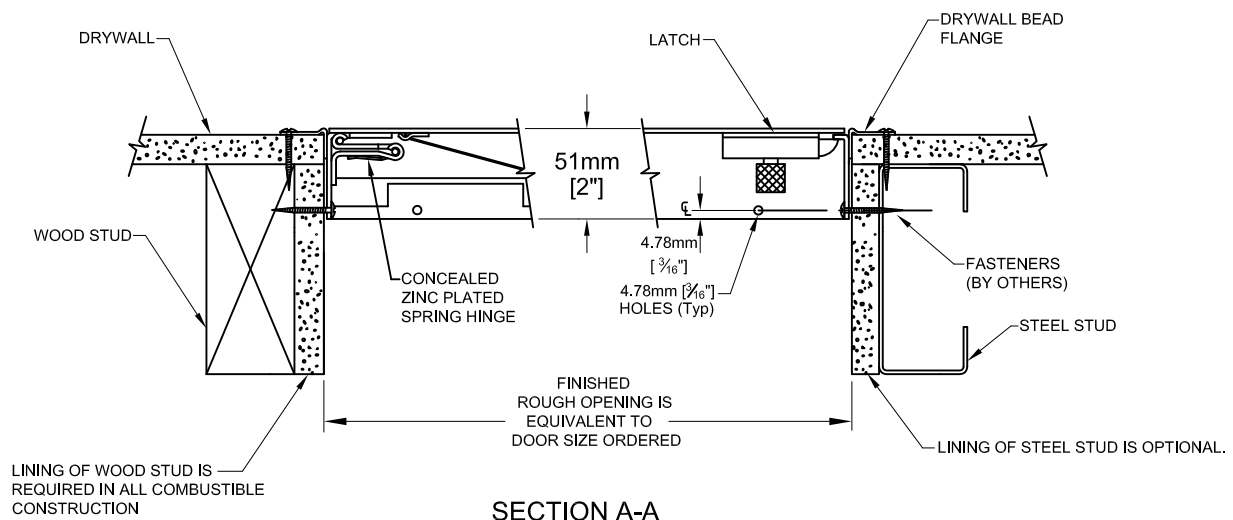
STANDARD CONSTRUCTION:

- MATERIAL** - SATIN FINISH GALVANIZED (GALVANNEALED) STEEL.
- PANEL** - 1.99mm [14 ga].
- FRAME** - 1.61mm [16 ga].
- FLANGE** - GALVANIZED STEEL DRYWALL BEAD TAPING FLANGE.
- HINGE** - CONCEALED ZINC PLATED SPRING HINGE (OPENS TO 175°).
- PANEL CLOSER** - THE AUTOMATIC PANEL CLOSER WILL CLOSE AND LATCH THE DOOR FROM AN OPEN POSITION OF APPROXIMATELY 90° AS REQUIRED BY CODE.
- LATCH** - 1/4" ALLEN KEY, WITH INTERIOR RELEASE.
- FINISH** - RUST INHIBITIVE PRIME COAT (OFF-WHITE).



FRONT ELEVATION

* Specifications subject to change without notice.



SECTION A-A

PROJECT: _____

CONTRACTOR: _____

ARCH. OR ENG.: _____

DATE: _____

Revised 26/07/22

These drawings are the property of Maxam Metal Products Ltd. and incorporates information which is proprietary. Publication and/or public distribution in whole or in part is expressly prohibited without the prior written consent of Maxam Metal Products Ltd. The information herein remains the property of Maxam Metal Products Ltd. All rights reserved.

DWN BY KB	DATE Jan. / 2014	DWG. NO. Sheet 1 of 3	REV. 1
--------------	---------------------	--------------------------	-----------

INSTALLATION:

The outer galvanized steel tapping flange and inner frame are manufactured with pre-punched mounting holes. For square fit, keep the door panel closed while installing. See installation instructions supplied with panel.

ORDERING:

- PLEASE ORDER BY ROUGH OPENING SIZE.
- WHEN ORDERING THE SECOND DIMENSION GIVEN IS THE HINGE SIDE. (ie. 457mm x 610mm [18" x 24"], THE 610mm [24"] DIMENSION IS THE HINGE SIDE.
- THESE DOORS ARE NON-RETURNABLE

FDB - STANDARD SIZES

Rough Opening Size W x H		No. of Latches/ Locks	Weight in kgs.	Weight in lbs.
Metric (mm)	Inches			
152 x 152	6 x 6	1	1.36	3.00
203 x 203	8 x 8	1	2.04	4.50
203 x 305	8 x 12	1	2.50	5.50
254 x 254	10 x 10	1	2.60	5.75
305 x 305	12 x 12	1	3.06	6.75
305 x 406	12 x 16	1	4.13	9.10
305 x 457	12 x 18	1	4.53	10.00
305 x 610	12 x 24	1	5.89	13.00
356 x 356	14 x 14	1	4.08	9.00
356 x 508	14 x 20	1	5.89	13.00
406 x 406	16 x 16	1	5.21	11.50
406 x 508	16 x 20	1	6.01	13.25
406 x 610	16 x 24	1	7.82	17.25
457 x 457	18 x 18	1	6.12	13.50
457 x 610	18 x 24	1	8.73	19.25
508 x 508	20 x 20	1	8.05	17.75
508 x 610	20 x 24	1	9.07	20.00
508 x 762	20 x 30	1	11.00	24.25
559 x 559	22 x 22	1	9.18	20.25
559 x 762	22 x 30	1	11.79	26.00
559 x 914	22 x 36	1	13.83	30.50
610 x 610	24 x 24	1	10.43	23.00



SEE FWD AND FWS MODELS FOR LARGER SIZES.

Net Opening = Width minus 51mm [2"]
 Height minus 29mm [1 1/8"]

WARRANTY:

One Year Limited warranty. For complete details see **Access Door** warranty document.

PROJECT SCHEDULE

- millimeters
- inches

Qty	Rough Opening Size		Options
	Width	Height	



Model FDB is designed to maintain the continuity of a fire barrier when installed in a **vertical separation**. The assembly is manufactured under the factory inspection service of Intertek (Warnock Hersey) and has a label reading: "Listed access frame and fire door assembly. **2 hour fire rating**. Vertical installation only. No temperature rise rating."

PROJECT: _____

PURCHASE ORDER: _____

CONTRACTOR: _____

APPROVED BY: _____

ARCH. OR ENG.: _____

DATE: _____

<small>Revised 26/07/22</small>			
DWN BY KB	DATE Jan. / 2014	DWG. NO. Sheet 2 of 3	REV.

OPTIONS: * - DENOTES ADDITIONAL COST.

MATERIAL :-

- STANDARD MATERIAL - GALVANNEALED STEEL. SEE SHEET 1 OF 3.

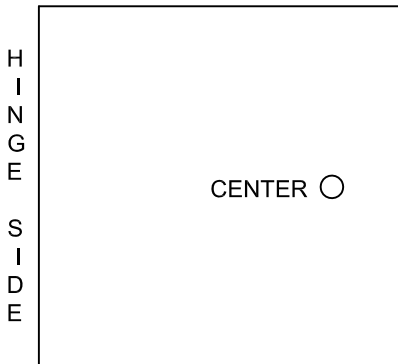
* - OPTIONAL MATERIAL - 304 STAINLESS STEEL WITH A NO. 4 POLISHED FINISH ON THE EXTERIOR SURFACE.

HARDWARE :-

- STANDARD HARDWARE - ¼" ALLEN KEY. SEE SHEET 1 OF 3.

- OPTIONAL HARDWARE

ONE LATCH



CENTER LATCH

- ALLEN KEY

- RAISED KNURLED KNOB.

* - 1⅝" MORTISE PREP ONLY.

* - 1⅝" MORTISE PREP COMPLETE WITH MORTISE CYLINDER.

PROJECT: _____

PURCHASE ORDER: _____

CONTRACTOR: _____

APPROVED BY: _____

ARCH. OR ENG.: _____

DATE: _____

△ Revised 26/07/22

DWN BY KB	DATE Jan. / 2014	DWG. NO. Sheet 3 of 3	REV. △
--------------	---------------------	--------------------------	-----------