

Designed for use where both fire rating and security are required.

STANDARD CONSTRUCTION:

MATERIAL - SATIN FINISH GALVANIZED (GALVANNEALED) STEEL.

PANEL - 2.75mm [12 ga].

FRAME - 2.75mm [12 ga].

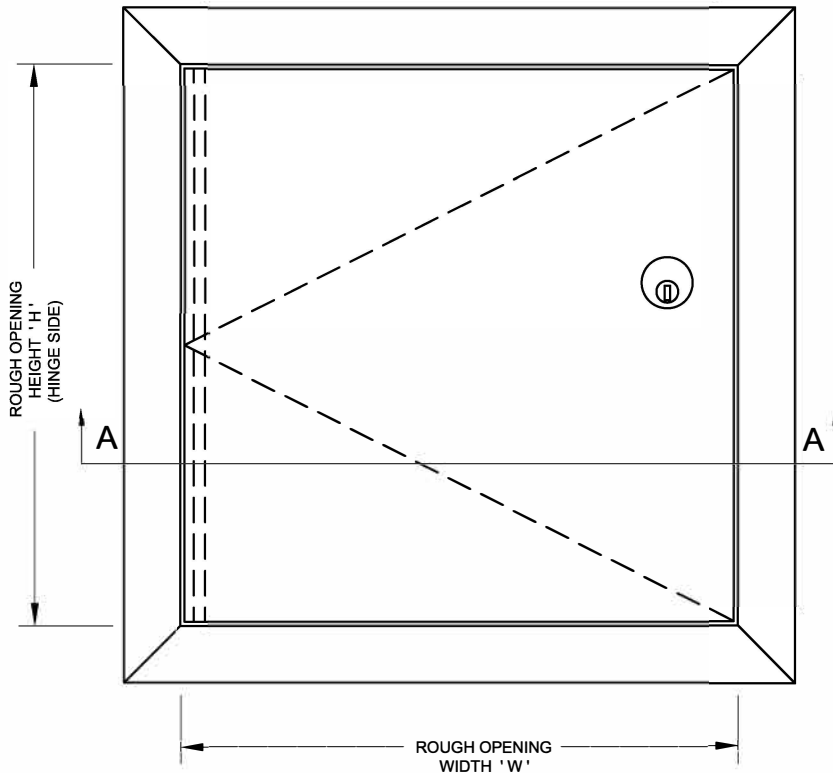
FLANGE - EXTERIOR FLANGE WIDTH 32mm [1¼"].

HINGE - CONCEALED CONTINUOUS ROD HINGE.

PANEL CLOSER - THE AUTOMATIC PANEL CLOSER WILL CLOSE AND LATCH THE DOOR FROM AN OPEN POSITION OF APPROXIMATELY 90° AS REQUIRED BY CODE.

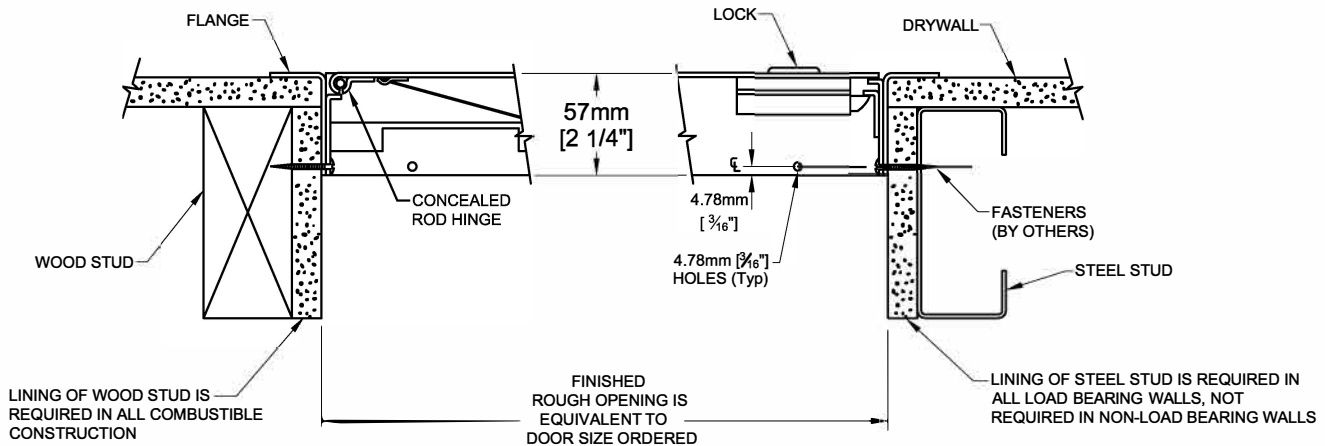
LOCK - 1½" MORTISE PREP COMPLETE WITH MORTISE CYLINDER.

FINISH - RUST INHIBITIVE PRIME COAT (OFF-WHITE).



FRONT ELEVATION

* Specifications subject to change without notice.



SECTION A-A

PROJECT: _____

CONTRACTOR: _____

ARCH. OR ENG.: _____

DATE: _____

Revised 26/07/22

These drawings are the property of Maxam Metal Products Ltd. and incorporates information which is proprietary. Publication and/or public distribution in whole or in part is expressly prohibited without the prior written consent of Maxam Metal Products Ltd. The information herein remains the property of Maxam Metal Products Ltd. All rights reserved.

DWN BY KB	DATE Oct / 2023	DWG. NO. Sheet 1 of 3	REV. 1
--------------	--------------------	--------------------------	-----------

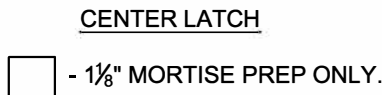
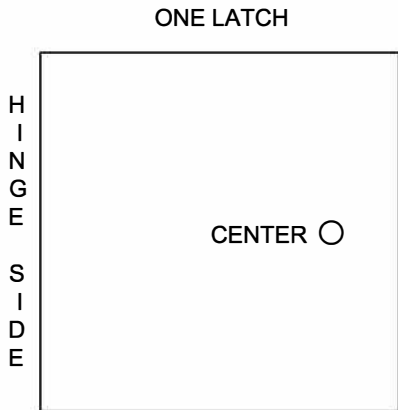
OPTIONS: * - DENOTES ADDITIONAL COST.

MATERIAL :-

- STANDARD MATERIAL - GALVANNEALED STEEL. SEE SHEET 1 OF 3.
- * - OPTIONAL MATERIAL - 304 STAINLESS STEEL WITH A NO. 4 POLISHED FINISH ON THE EXTERIOR SURFACE.
- * - MASONRY ANCHORS ATTACHED.

HARDWARE :-

- STANDARD HARDWARE - 1 1/8" MORTISE PREP c/w MORTISE CYLINDER. SEE SHEET 1 OF 3.
- OPTIONAL HARDWARE .
- * - CONTINUOUS PIANO HINGE.
- * - MOUNTING BRACKETS FOR ANTI-TAMPER SWITCH(ES).



PROJECT: _____

PURCHASE ORDER: _____

CONTRACTOR: _____

APPROVED BY: _____

ARCH. OR ENG.: _____

DATE: _____

△ Revised 26/07/22

DWN BY KB	DATE Oct / 2023	DWG. NO. Sheet 3 of 3	REV. 1
--------------	--------------------	--------------------------	-----------