

Provides additional strength when larger and more rigid doors are necessary. Reduces panel swing radius.

STANDARD CONSTRUCTION:

MATERIAL - SATIN FINISH GALVANIZED (GALVANNEALED) STEEL.

PANEL - 1.99mm [14 ga.]

FRAME - 1.61mm [16 ga.]

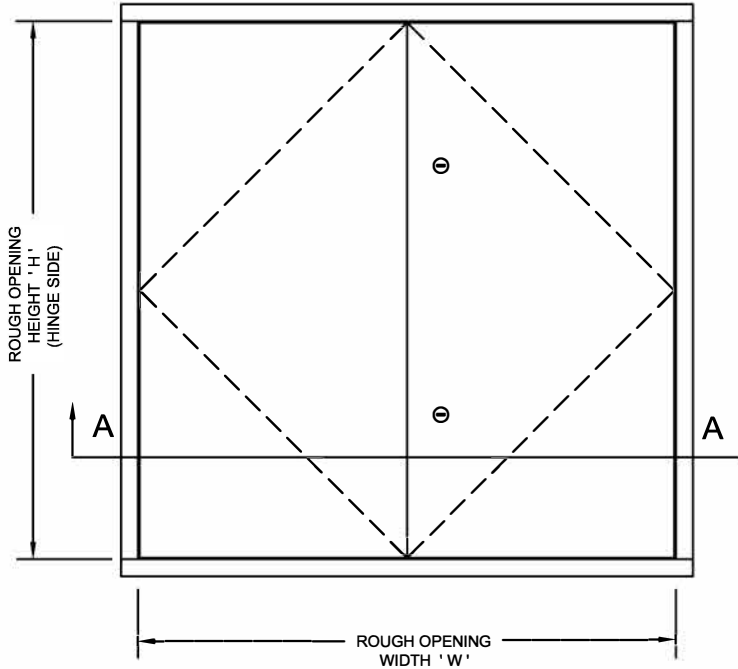
FLANGE - 19mm [$\frac{3}{4}$ "] UP TO AND INCLUDING 914mm x 914mm [36" x 36"].
32mm [$1\frac{1}{4}$ "] GREATER THAN 914mm x 914mm [36" x 36"].

HINGE - CONCEALED ZINC PLATED SPRING HINGES (OPENS TO 175°).
NUMBER OF HINGES VARIES WITH SIZE OF DOOR.

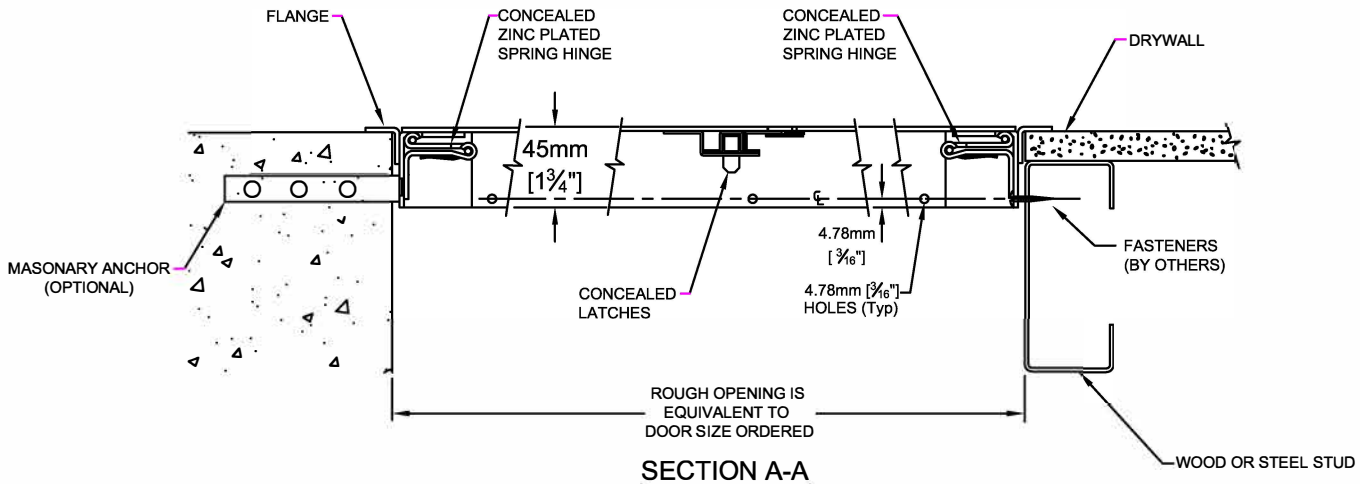
LATCH - SCREWDRIVER OPERATED CAM LATCHES ON PANEL THAT OPERATES FIRST.
- CONCEALED ZINC PLATED SPRING LATCHES ON SECOND PANEL.
NUMBER OF LATCHES VARIES WITH SIZE OF DOOR.

FINISH - RUST INHIBITIVE PRIME COAT (OFF-WHITE).

* Specifications subject to change without notice.



FRONT ELEVATION




PROJECT: _____

CONTRACTOR: _____

ARCH. OR ENG.: _____

DATE: _____

These drawings are the property of Maxam Metal Products Ltd. and incorporates information which is proprietary. Publication and/or public distribution in whole or in part is expressly prohibited without the prior written consent of Maxam Metal Products Ltd. The information herein remains the property of Maxam Metal Products Ltd. All rights reserved.

DWN BY KB	DATE Dec. / 2022	DWG. NO. Sheet 1 of 2	REV. 
--------------	---------------------	--------------------------	---

INSTALLATION:

The frame is manufactured with mounting holes.
 Factory installed anchor straps are available for masonry upon request.

ORDERING:

- PLEASE ORDER BY ROUGH OPENING SIZE.
- WHEN ORDERING THE SECOND DIMENSION GIVEN IS THE HINGE SIDE. (ie. 457mm x 610mm [18" x 24"], THE 610mm [24"] DIMENSION IS THE HINGE SIDE.
- THESE DOORS ARE NON-RETURNABLE.

OPTIONS: * - DENOTES ADDITIONAL COST.

- * - 3/16" ALLEN KEY CAM.
- * - TORX HEAD CAM.
- * - NON-LOCKING TWO POSITION HANDLE.
- * - CYLINDER KEY LOCK (NON RE-KEYABLE) KEYED ALIKE.
- * - 1 1/8" MORTISE PREP ONLY.
- * - 1 1/8" MORTISE PREP COMPLETE WITH MORTISE CYLINDER.
- * - 304 STAINLESS STEEL WITH A NO. 4 POLISHED FINISH ON EXTERIOR FACE.
- * - MASONRY ANCHOR STRAPS ATTACHED

WARRANTY:

One Year Limited warranty. For complete details see **Access Door** warranty document.

NDL - STANDARD SIZES

Rough Opening Size W x H		No. of Cams	Weight in kgs.	Weight in lbs.
Metric (mm)	Inches			
1219 x 610	48 x 24	2	19.96	44.00
1219 x 762	48 x 30	2	22.68	50.00
1219 x 914	48 x 36	3	26.31	58.00
1219 x 1219	48 x 48	4	33.57	74.00
1219 x 1524	48 x 60	5	40.82	90.00
1524 x 610	60 x 36	2	23.59	52.00
1524 x 762	60 x 30	2	28.58	63.00
1524 x 914	60 x 36	3	35.38	78.00
1524 x 1219	60 x 48	4	40.82	90.00
1829 x 762	72 x 30	4	32.66	72.00
1829 x 914	72 x 36	4	37.20	82.00
1829 x 1219	72 x 48	6	47.63	105.00



Net Opening = Width minus 102mm [4"]
 Height minus 32mm [1 1/4"]

PROJECT SCHEDULE

- millimeters
 - inches

Qty	Rough Opening Size		Options
	Width	Height	



PROJECT: _____

PURCHASE ORDER: _____

CONTRACTOR: _____

APPROVED BY: _____

ARCH. OR ENG.: _____

DATE: _____