



Maxam Metal Products Ltd.  
British Columbia, Canada

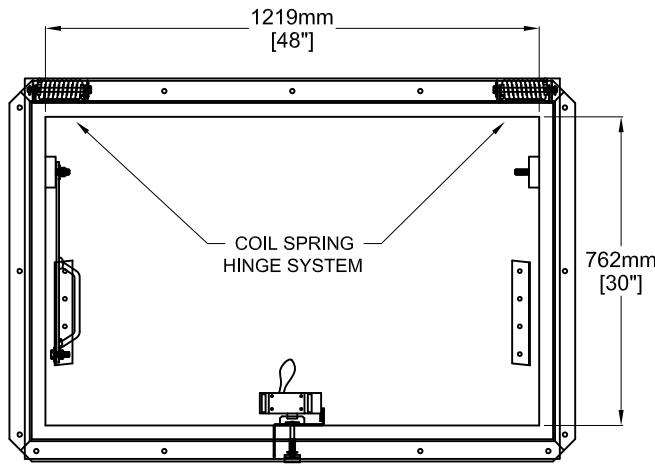
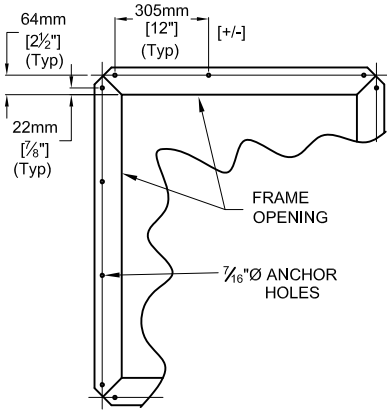
Tel: 604-433-4243  
Fax: 604-433-4148

Toll Free Tel: 1-866-446-2926  
Toll Free Fax: 1-866-436-2926

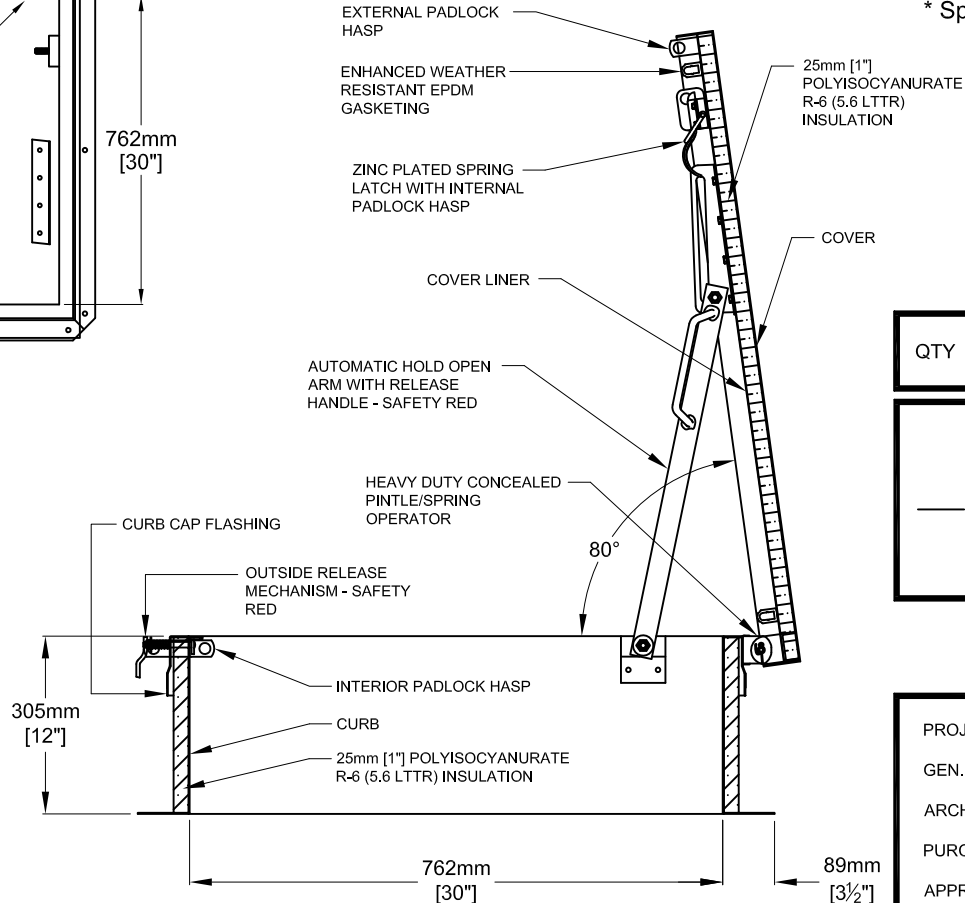
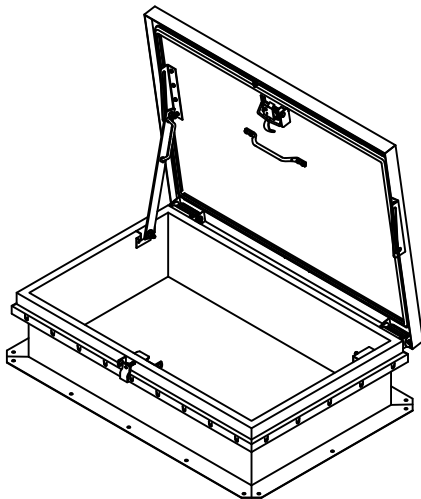
Website: www.maxammetal.com  
Email: info@maxammetal.com

## 30" X 48" [762mm X 1219mm] ROOF HATCH

### ANCHOR HOLE LAYOUT



**PLAN VIEW**



**SECTION**

### FACTORY FINISHES

GALVANIZED (GALVANNEALED) STEEL - GREY PRIME.

HARDWARE - ZINC PLATED SPRING LATCH c/w INTERNAL & EXTERNAL PADLOCK HASPS.

NOTE : - HOLD OPEN ARM - STANDARD POWDER COATED SAFETY RED.

- NUMBER OF HINGES AND COIL SPRINGS WILL VARY WITH SIZE OF HATCH.

- HOLD OPEN ARM DESIGNED TO BE MOVABLE FROM ONE SIDE TO ANOTHER TO ACCOMMODATE SITE CONDITION.

- LIVE LOAD = 40 LBS PER SQUARE FOOT.

\* Specifications subject to change without notice.

### LIMITED 5 YEAR WARRANTY

QTY	MODEL	MATERIAL	COVER	CURB	COVER LINER
___	RHS-3	GALV. STEEL	STEEL 14 ga 1.99mm	STEEL 14 ga 1.99mm	STEEL 22 ga 0.85mm

PROJECT: \_\_\_\_\_

GEN. CONTRACTOR: \_\_\_\_\_

ARCH. OR ENG.: \_\_\_\_\_

PURCHASE ORDER: \_\_\_\_\_ DATE: \_\_\_\_\_

APPROVED BY: \_\_\_\_\_