

**ANCHOR  
HOLE  
LAYOUT**



Maxam Metal Products Ltd.  
British Columbia, Canada

Tel: 604-433-4243  
Fax: 604-433-4148

Toll Free Tel: 1-866-446-2926  
Toll Free Fax: 1-866-436-2926

Website: www.maxammetal.com  
Email: info@maxammetal.com

**36" X 36" [914mm X 914mm]  
ROOF HATCH**

**FACTORY FINISHES**

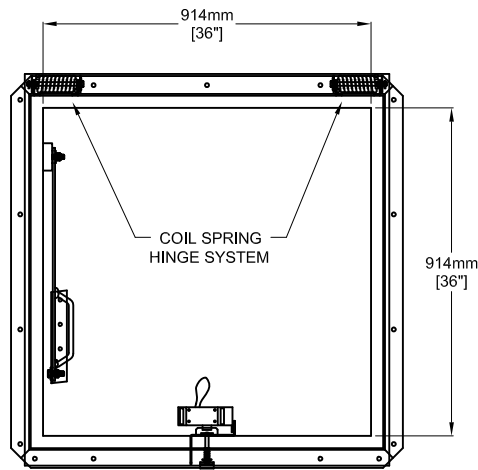
GALVANIZED (GALVANNEALED) STEEL - GREY PRIMER

ALUMINUM - MILL FINISH

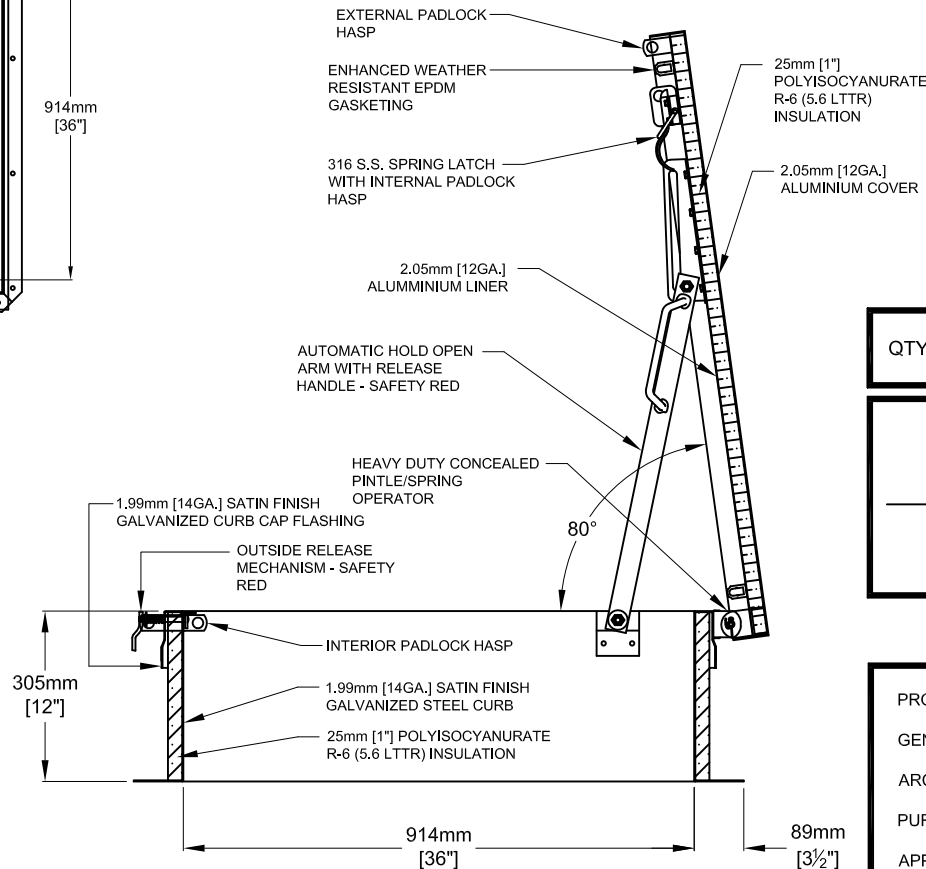
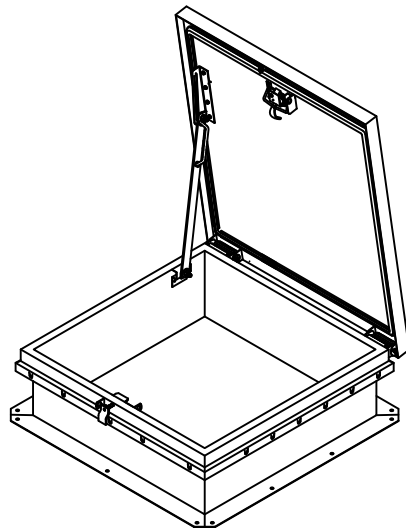
HARDWARE - STAINLESS SREEL SPRING LATCH WITH  
INTERNAL & EXTERNAL PADLOCK HASPS.

NOTE: - HOLD OPEN ARM - STANDARD POWDER COATED  
SAFETY RED.  
- NUMBER OF HINGES AND COIL SPRINGS WILL  
VARY WITH SIZE OF HATCH.

\* Specifications subject to change without notice.



**PLAN VIEW**



**SECTION**

**LIMITED 5 YEAR WARRANTY**

QTY	MODEL	MATERIAL	COVER	CURB	COVER LINER
—	RSA-2	Alum. / Galv. Steel	Alum. 12 ga 2.05mm	Steel 14 ga 1.99mm	Alum. 12 ga 2.05mm

PROJECT: \_\_\_\_\_  
 GEN. CONTRACTOR: \_\_\_\_\_  
 ARCH. OR ENG.: \_\_\_\_\_  
 PURCHASE ORDER: \_\_\_\_\_ DATE: \_\_\_\_\_  
 APPROVED BY: \_\_\_\_\_